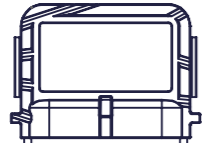


MOTOR TYPE	EA-193-80-10A+		ENCODER:	SUPERSEAL 1.5 SOCKET	CUSTOMER APPROVAL:
VOLTAGE	VDC	48		MATING PLUG P/N:	NAME:
IEC DUTY	S2	60		282090-1	DATE:
RATED POWER	KW	10	PIN 1 : 5V PIN 2 : TEMP PIN 3 : SIN PIN 4 : COS PIN 5 : GND PIN 6 : SHIELD	MATING PIN P/N:	SIGNED:
RATED SPEED	RPM	4000		183035-1	
RATED FREQ.	HZ	333			
IP RATING*	IP	65			
INSUL. CLASS	-	200			
SENSOR CYCLES	CPR	5			
TEMP SENSOR	PT1000	CLASS B			

NOTES:

- SHAFT ROTATES CW, WHEN VIEWED FROM DRIVE END, WHEN COSINE SIGNAL LEADS SINE SIGNAL BY 90 DEGREES
- SHAFT ROTATES CW, WHEN VIEWED FROM DRIVE END, WHEN U-V-W WIRED PER DIAGRAM
- TERMINAL NUTS: TORQUE TO 15Nm
- SEE MANUAL FOR RECOMMENDED TORQUE VALUES OF MOTOR FASTENERS
- ESTIMATED ROTATIONAL MOMENT OF INERTIA: 11031 kg/mm<sup>2</sup>
- \* IP RATINGS - SEE USER MANUAL FOR FURTHER DETAILS

REV	CHANGE REF	DESCRIPTION	DRAWN BY	CHECKED	APPROVED	DATE
1	ECN069	PRODUCTION RELEASE	EB	SD	SD	29/05/2025

TITLE:	193-080-10A+, E-AXLE 1, 48V, IP65		
DWG NO.	2019-002-064	REV	1
SCALE	1:2	MASS (APPROX.)	19.08kg

**electrified** motors

ELECTRIFIED AUTOMATION LTD,  
UNIT 4 BEECH BUSINESS PARK,  
BRIDGWATER,  
SOMERSET, TA6 4FF, UNITED KINGDOM

IF IN DOUBT - ASK ALL DIMENSION IN MM CONFORMS TO BS8888

©2025 ELECTRIFIED AUTOMATION LTD.  
REPRODUCTION OR TRANSMISSION OF DATA HEREIN IS FORBIDDEN WITHOUT WRITTEN PERMISSION FROM ELECTRIFIED AUTOMATION LTD.

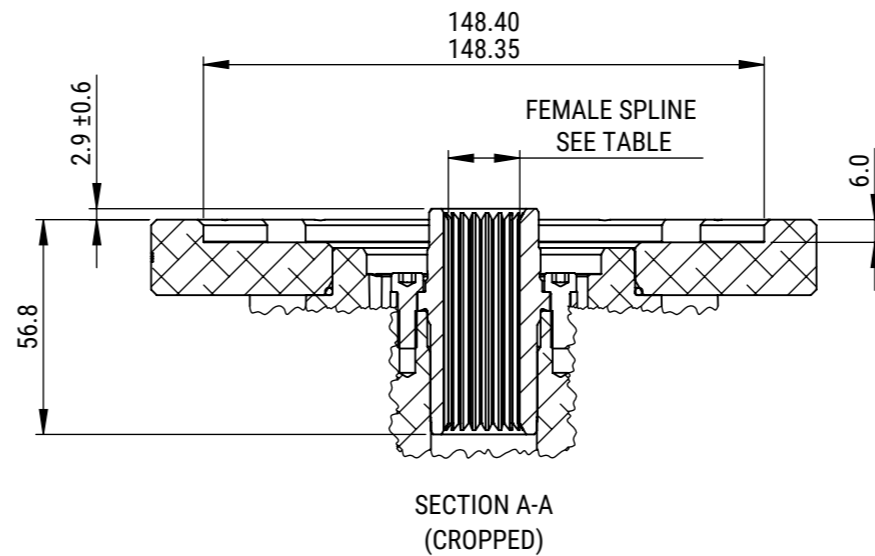
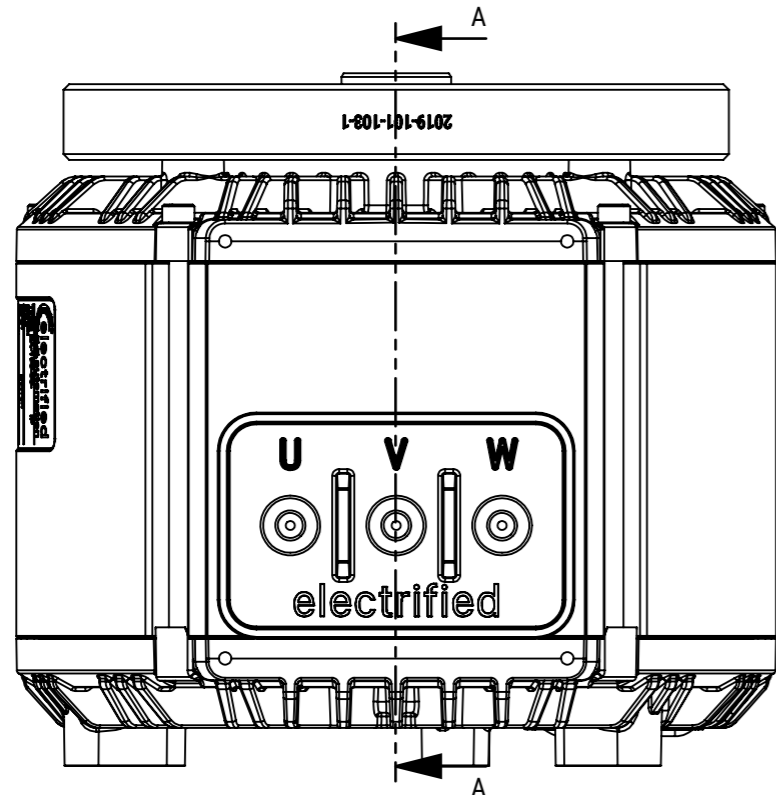
DOCUMENT TYPE  
**ASSEMBLY DRAWING**

DOCUMENT STATUS  
**PRODUCTION APPROVED**

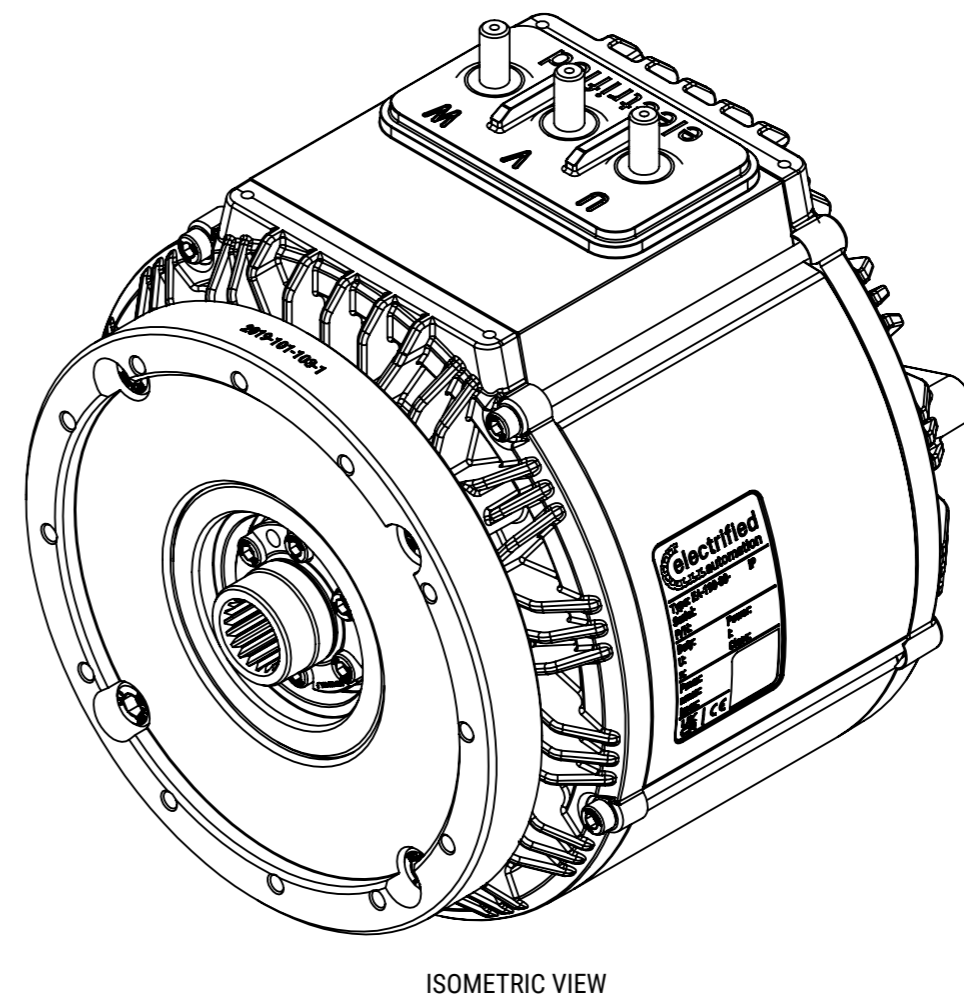
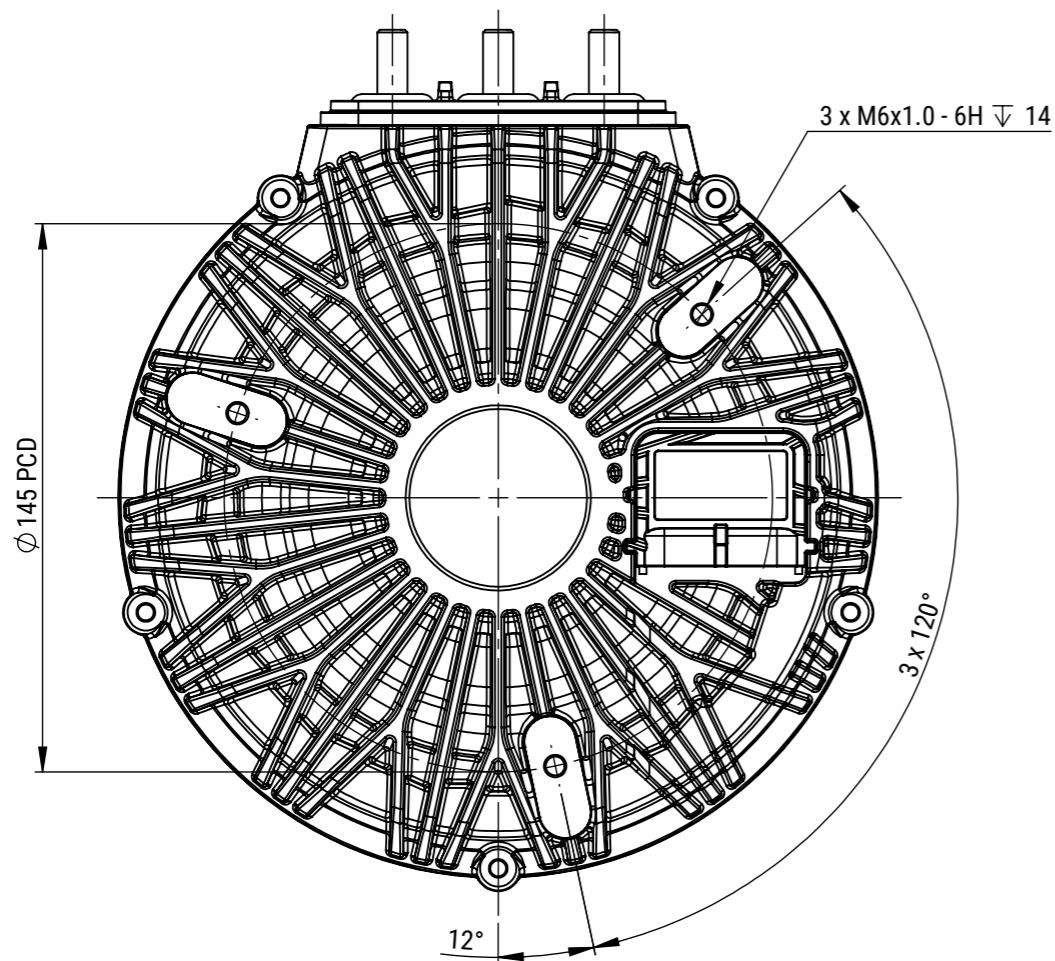
STRICTLY NO DEVIATION FROM DRAWING PERMISSABLE WITHOUT APPROVED CONCESSION FROM ELECTRIFIED AUTOMATION

SHEET  
1 OF 2

**A3**



INTERNAL INVOLUTE SPLINE DATA		
SPEC.	ANSI B92.1 1996	
SPLINE TYPE	FILLET ROOT / SIDE FIT	
CLASS		5
NUMBER OF TEETH		19
SPLINE PITCH		24/48
PRESSURE ANGLE	°	45
BASE DIAMETER (REF)	MM	14.219
PITCH DIMETER (REF)	MM	20.108
MAJOR DIAMETER (MAX)	MM	21.819
FORM DIAMETER	MM	21.285
MINOR DIAMETER	MM	19.609
		19.482
MIN. EFF. CIRC. SPACE WIDTH (Sv)	MM	1.875
MAX. ACTUAL SPACE WIDTH (Sv)		1.941
MEASUREMENT BETWEEN PINS	MM	17.054
		17.005
PIN DIAMETER	MM	2.032



REV	CHANGE REF	DESCRIPTION	DRAWN BY	CHECKED	APPROVED	DATE
1	ECN069	PRODUCTION RELEASE	EB	SD	SD	29/05/2025

TITLE: **193-080-10A+, E-AXLE 1, 48V, IP65**

DWG NO. **2019-002-064** REV **1** SCALE **1:2** MASS (APPROX.) **19.08kg**

ELECTRIFIED AUTOMATION LTD,  
UNIT 4 BEECH BUSINESS PARK,  
BRIDGWATER,  
SOMERSET, TA6 4FF, UNITED KINGDOM

©2025 ELECTRIFIED AUTOMATION LTD.  
REPRODUCTION OR TRANSMISSION OF DATA HEREIN IS  
FORBIDDEN WITHOUT WRITTEN PERMISSION FROM  
ELECTRIFIED AUTOMATION LTD.

STRICTLY NO DEVIATION FROM  
DRAWING PERMISSABLE WITHOUT  
APPROVED CONCEPTION FROM  
ELECTRIFIED AUTOMATION

IF IN DOUBT - ASK ALL DIMENSION IN MM CONFORMS TO BS8888	DOCUMENT TYPE <b>ASSEMBLY DRAWING</b>	DOCUMENT STATUS <b>PRODUCTION APPROVED</b>	SHEET <b>2 OF 2</b>	<b>A3</b>
--	--	---	------------------------	-----------