

| | | | | | |
|---------------|----------------|---------|----------|----------------------|--------------------|
| MOTOR TYPE | EA-193-40-18A+ | | ENCODER: | SUPERSEAL 1.5 SOCKET | CUSTOMER APPROVAL: |
| VOLTAGE | VDC | 48 | | MATING PLUG P/N: | NAME: |
| IEC DUTY | S2 | 60 | | MATING PIN P/N: | DATE: |
| RATED POWER | KW | 5.5 | | 282090-1 | SIGNED: |
| RATED SPEED | RPM | 4000 | | 183035-1 | |
| RATED FREQ. | HZ | 333 | | | |
| IP RATING* | IP | 65 | | | |
| INSUL. CLASS | - | 200 | | | |
| SENSOR CYCLES | CPR | 5 | | | |
| TEMP SENSOR | PT1000 | CLASS B | | | |

NOTES:

- SHAFT ROTATES CW, WHEN VIEWED FROM DRIVE END, WHEN COSINE SIGNAL LEADS SINE SIGNAL BY 90 DEGREES
- SHAFT ROTATES CW, WHEN VIEWED FROM DRIVE END, WHEN U-V-W WIRED PER DIAGRAM
- TERMINAL NUTS: TORQUE TO 15Nm
- SEE MANUAL FOR RECOMMENDED TORQUE VALUES OF MOTOR FASTENERS
- ESTIMATED ROTATIONAL MOMENT OF INERTIA: 5699 kg/mm²
- * IP RATINGS - SEE USER MANUAL FOR FURTHER DETAILS

| REV | CHANGE REF | DESCRIPTION | DRAWN BY | CHECKED | APPROVED | DATE |
|-----|------------|--------------------|----------|---------|----------|------------|
| 1 | ECN069 | PRODUCTION RELEASE | EB | SD | SD | 28/05/2025 |

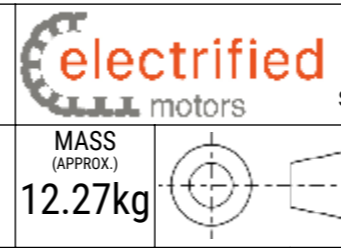
TITLE: **193-040-18A+, SAE A, Z9, 48V, IP65**

DWG NO. **2019-002-071**

REV **1**

SCALE **1:2**

MASS (APPROX.) **12.27kg**



ELECTRIFIED AUTOMATION LTD,
UNIT 4 BEECH BUSINESS PARK,
BRIDGWATER,
SOMERSET, TA6 4FF, UNITED KINGDOM

©2025 ELECTRIFIED AUTOMATION LTD.
REPRODUCTION OR TRANSMISSION OF DATA HEREIN IS
FORBIDDEN WITHOUT WRITTEN PERMISSION FROM
ELECTRIFIED AUTOMATION LTD.

STRICTLY NO DEVIATION FROM
DRAWING PERMISSABLE WITHOUT
APPROVED CONCESSION FROM
ELECTRIFIED AUTOMATION

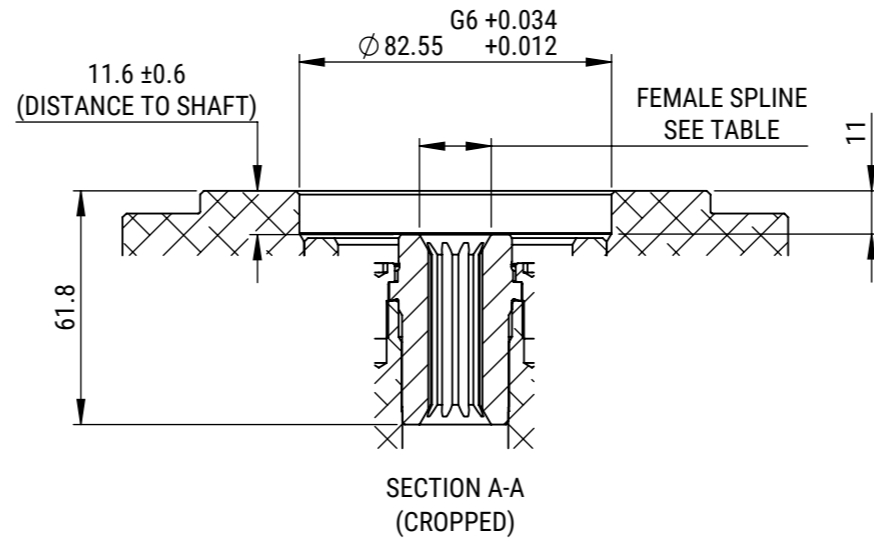
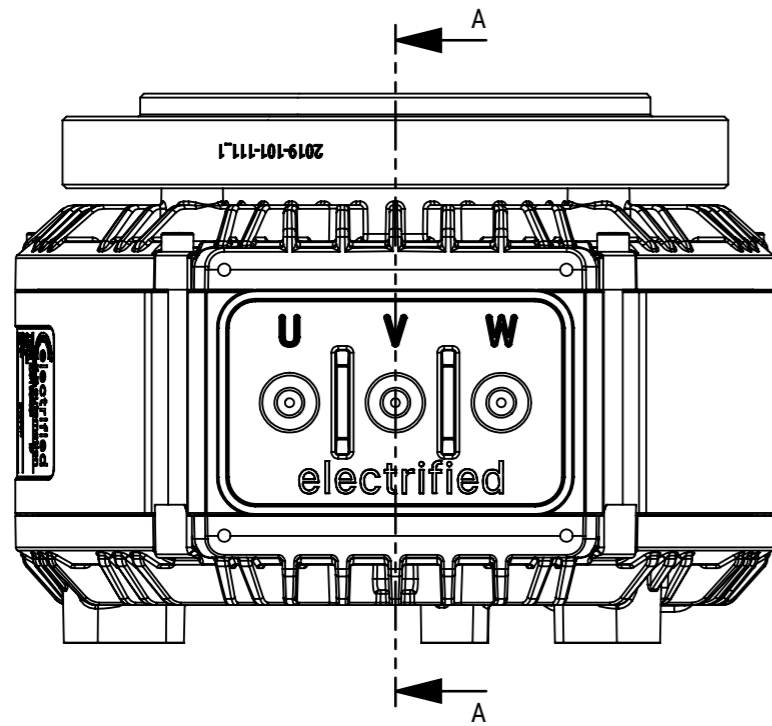
IF IN DOUBT - ASK
ALL DIMENSION IN MM
CONFORMS TO BS8888

DOCUMENT TYPE
**ASSEMBLY
DRAWING**

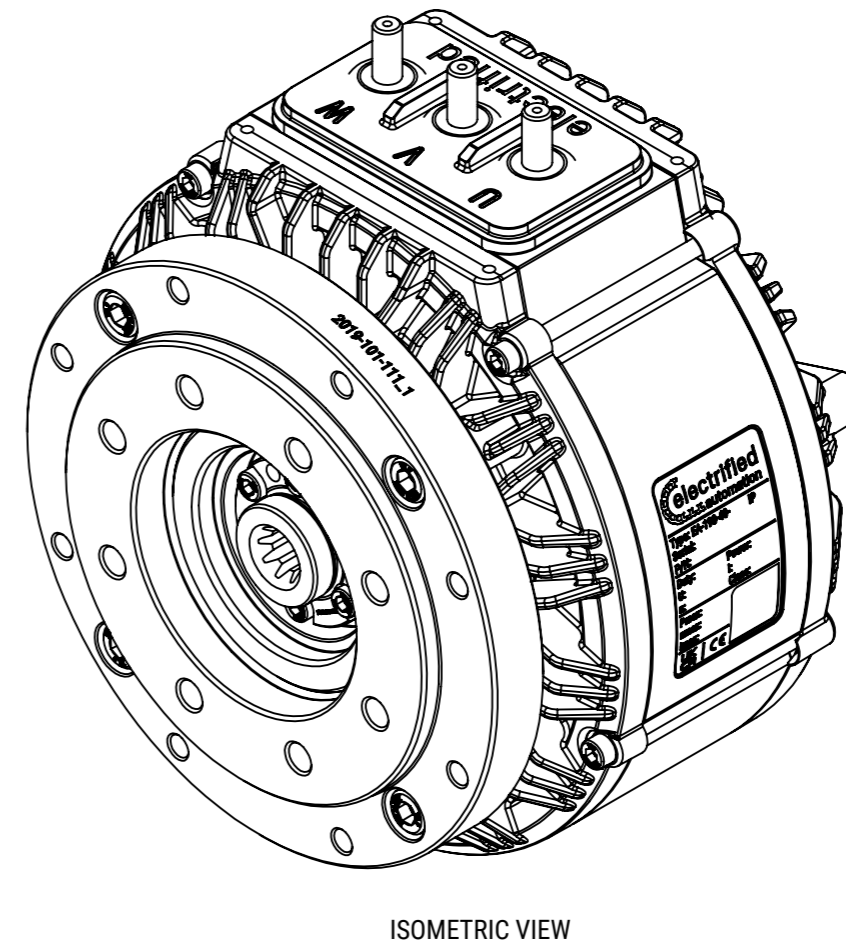
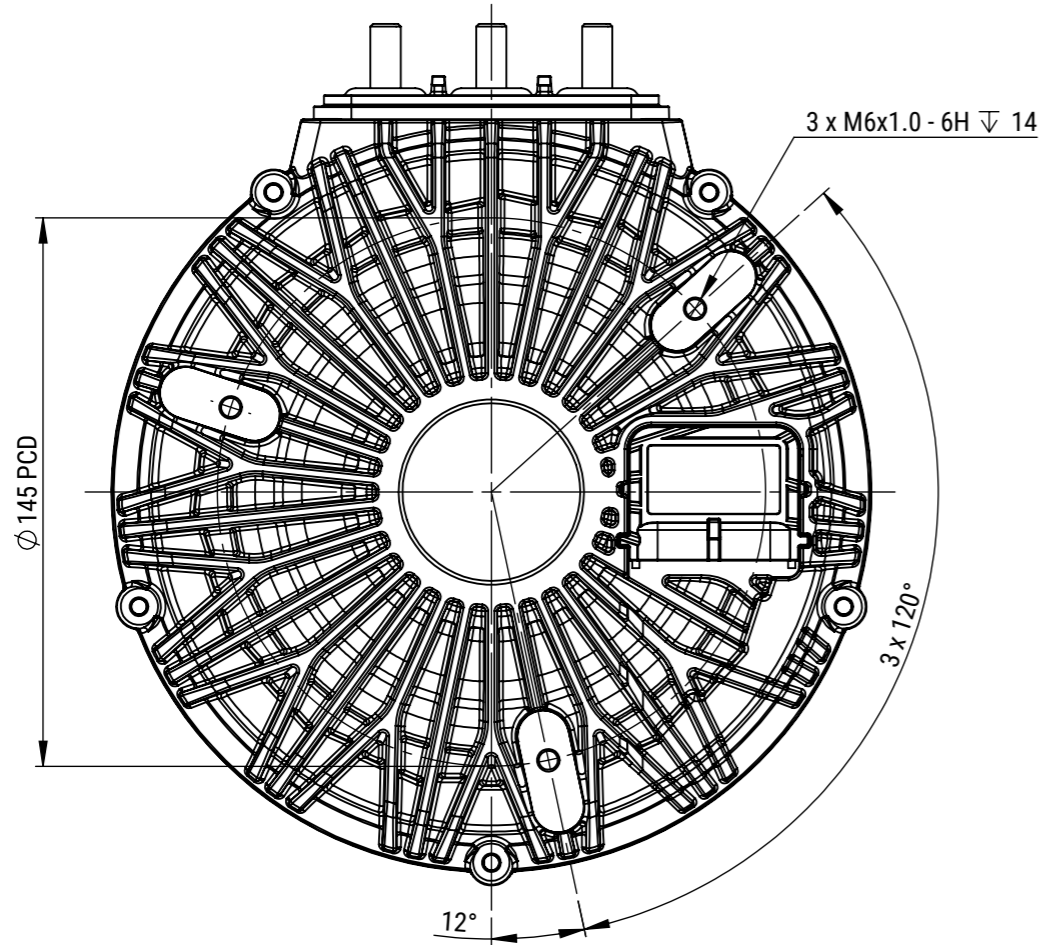
DOCUMENT STATUS
**PRODUCTION
APPROVED**

SHEET
1 OF 2

A3



| INTERNAL INVOLUTE SPLINE DATA | | | |
|----------------------------------|----------------------|--------|-------|
| SPEC: | ANSI B92.1 1996 | | |
| SPLINE TYPE : | FLAT ROOT / SIDE FIT | | |
| CLASS | | | 5 |
| NUMBER OF TEETH | | | 9 |
| SPLINE PITCH | | | 16/32 |
| PRESSURE ANGLE | ° | | 30 |
| BASE DIAMETER | MM | 12.373 | REF |
| PITCH DIMETER | MM | 14.288 | REF |
| MAJOR DIAMETER | MM | 16.535 | MAX |
| FORM DIAMETER | MM | 15.977 | |
| MINOR DIAMETER | MM | 13.056 | |
| | | 12.929 | |
| MIN. EFF. CIRC. SPACE WIDTH (Sv) | MM | 2.494 | |
| MAX. ACTUAL. SPACE WIDTH (Sv) | MM | 2.560 | |
| MEASUREMENT BETWEEN PINS | MM | 10.089 | |
| | | 10.041 | |
| PIN DIAMETER | MM | 2.743 | |



| REV | CHANGE REF | DESCRIPTION | DRAWN BY | CHECKED | APPROVED | DATE |
|-----|------------|--------------------|----------|---------|----------|------------|
| 1 | ECN069 | PRODUCTION RELEASE | EB | SD | SD | 28/05/2025 |

TITLE: **193-040-18A+, SAE A, Z9, 48V, IP65**



ELECTRIFIED AUTOMATION LTD,
UNIT 4 BEECH BUSINESS PARK,
BRIDGWATER,
SOMERSET, TA6 4FF, UNITED KINGDOM

©2025 ELECTRIFIED AUTOMATION LTD.
REPRODUCTION OR TRANSMISSION OF DATA HEREIN IS
FORBIDDEN WITHOUT WRITTEN PERMISSION FROM
ELECTRIFIED AUTOMATION LTD.

STRICTLY NO DEVIATION FROM
DRAWING PERMISSABLE WITHOUT
APPROVED CONCEPTION FROM
ELECTRIFIED AUTOMATION

| | | | | | | | |
|--------------|-----|-------|----------------|--|------------------|---------------------|--------|
| DWG NO. | REV | SCALE | MASS (APPROX.) | IF IN DOUBT - ASK ALL DIMENSION IN MM CONFORMS TO BS8888 | DOCUMENT TYPE | DOCUMENT STATUS | SHEET |
| 2019-002-071 | 1 | 1:2 | 12.27kg | | ASSEMBLY DRAWING | PRODUCTION APPROVED | 2 OF 2 |

A3