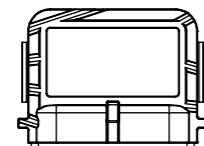


MOTOR TYPE	EA-193-40-18A+	
VOLTAGE	VDC	48
IEC DUTY	S2	60
RATED POWER	KW	5.5
RATED SPEED	RPM	4000
RATED FREQ.	HZ	333
IP RATING*	IP	65
INSUL. CLASS	-	200
SENSOR CYCLES	CPR	5
TEMP SENSOR	PT1000	CLASS B

ENCODER:

SUPERSEAL 1.5 SOCKET

CUSTOMER APPROVAL:



MATING PLUG P/N:  
282090-1

NAME:

DATE:

SIGNED:

MATING PIN P/N:  
183035-1

PIN 1 : 5V  
PIN 2 : TEMP  
PIN 3 : SIN  
PIN 4 : COS  
PIN 5 : GND  
PIN 6 : SHIELD

NOTES:

- SHAFT ROTATES CW, WHEN VIEWED FROM DRIVE END, WHEN COSINE SIGNAL LEADS SINE SIGNAL BY 90 DEGREES
- SHAFT ROTATES CW, WHEN VIEWED FROM DRIVE END, WHEN U-V-W WIRED PER DIAGRAM
- TERMINAL NUTS: TORQUE TO 15Nm
- SEE MANUAL FOR RECOMMENDED TORQUE VALUES OF MOTOR FASTENERS
- ESTIMATED ROTATIONAL MOMENT OF INERTIA: 5693 kg/mm<sup>2</sup>
- \* IP RATINGS - SEE USER MANUAL FOR FURTHER DETAILS

REV	CHANGE REF	DESCRIPTION	DRAWN BY	CHECKED	APPROVED	DATE
1	ECN069	PRODUCTION RELEASE	EB	SD	SD	28/05/2025

TITLE:  
**193-040-18A+, SAE B,  
Z13, 48V, IP65**

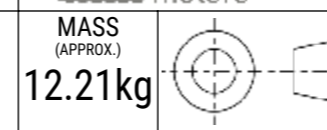


ELECTRIFIED AUTOMATION LTD,  
UNIT 4 BEECH BUSINESS PARK,  
BRIDGWATER,  
SOMERSET, TA6 4FF, UNITED KINGDOM

©2025 ELECTRIFIED AUTOMATION LTD.  
REPRODUCTION OR TRANSMISSION OF DATA HEREIN IS  
FORBIDDEN WITHOUT WRITTEN PERMISSION FROM  
ELECTRIFIED AUTOMATION LTD.

STRICTLY NO DEVIATION FROM  
DRAWING PERMISSABLE WITHOUT  
APPROVED CONCESSION FROM  
ELECTRIFIED AUTOMATION

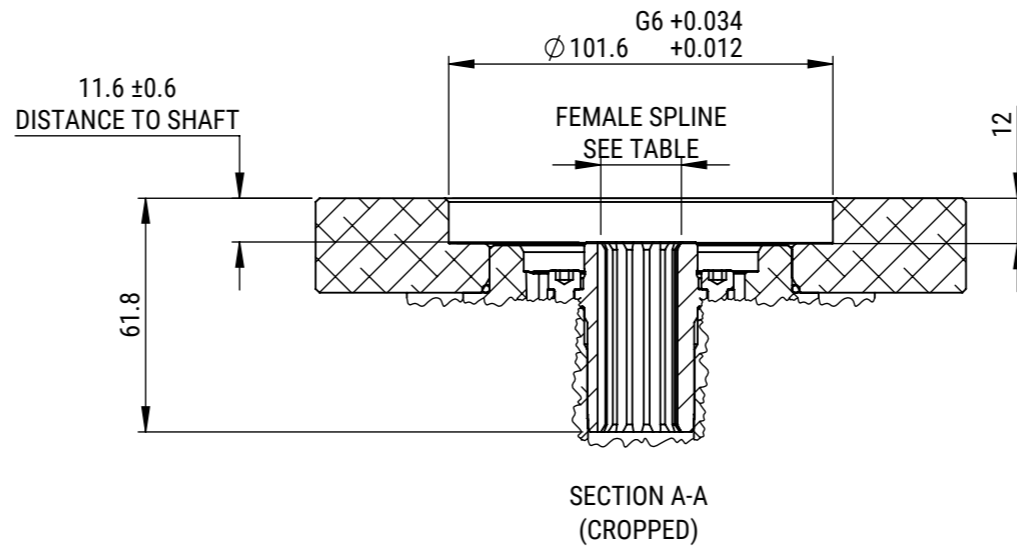
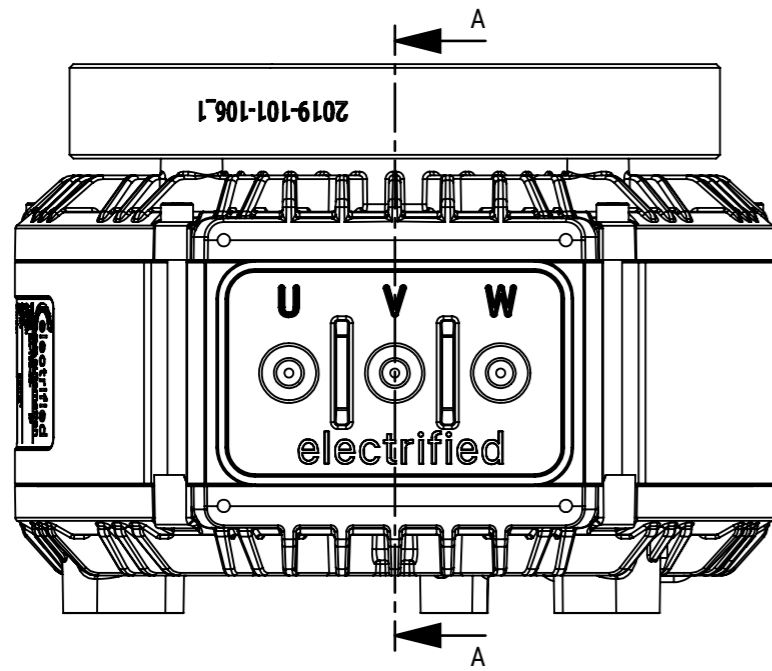
DWG NO.	REV	SCALE	MASS (APPROX.)
2019-002-082	1	1:2	12.21kg



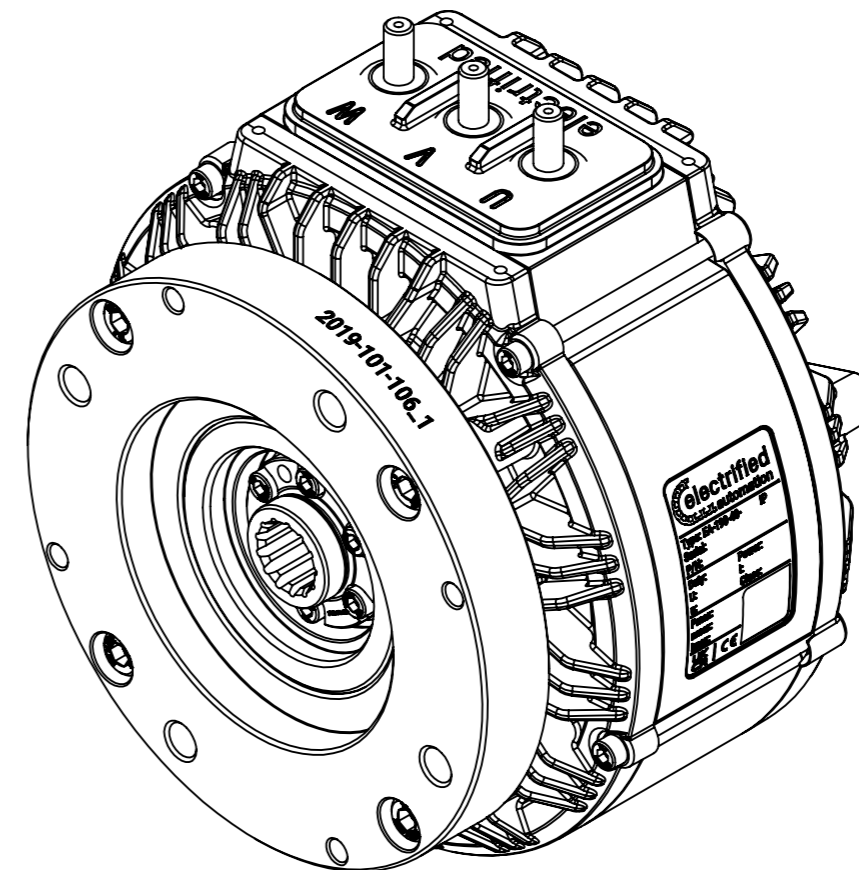
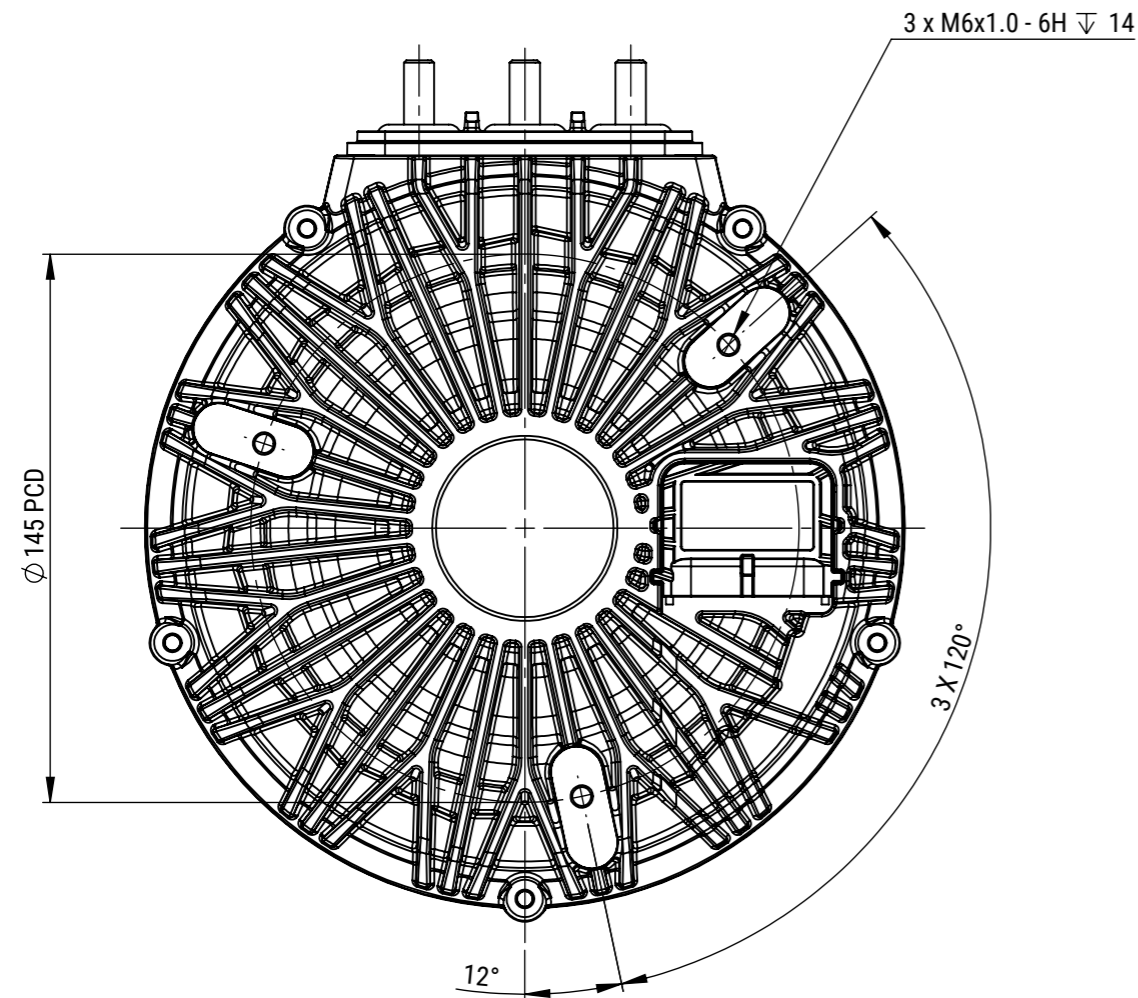
IF IN DOUBT - ASK  
ALL DIMENSION IN MM  
CONFORMS TO BS8888

DOCUMENT TYPE	DOCUMENT STATUS	SHEET
ASSEMBLY DRAWING	PRODUCTION APPROVED	1 OF 2

A3



INTERNAL INVOLUTE SPLINE DATA		
SPEC.	ANSI B92.1 1996	
SPLINE TYPE :	FLAT ROOT / SIDE FIT	
CLASS		5
NUMBER OF TEETH		13
SPLINE PITCH		16/32
PRESSURE ANGLE	°	30
BASE DIAMETER (REF)	MM	17.873
PITCH DIAMETER (REF)	MM	20.638
MAJOR DIAMETER (MAX)	MM	22.885
FORM DIAMETER	MM	22.327
MINOR DIAMETER	MM	19.279
		19.152
MIN. EFF. CIRC. SPACE WIDTH (Sv)	MM	2.494
MAX. ACTUAL SPACE WIDTH (Sv)		2.560
MEASUREMENT BETWEEN PINS	MM	16.589
		16.540
PIN DIAMETER	MM	2.743



ISOMETRIC VIEW

REV	CHANGE REF	DESCRIPTION	DRAWN BY	CHECKED	APPROVED	DATE
1	ECN069	PRODUCTION RELEASE	EB	SD	SD	28/05/2025

TITLE: **193-040-18A+, SAE B, Z13, 48V, IP65**

DWG NO. **2019-002-082**

REV **1**

SCALE **1:2**

MASS (APPROX.) **12.21kg**

**electrified** motors

ELECTRIFIED AUTOMATION LTD,  
UNIT 4 BEECH BUSINESS PARK,  
BRIDGWATER,  
SOMERSET, TA6 4FF, UNITED KINGDOM

IF IN DOUBT - ASK ALL DIMENSION IN MM CONFORMS TO BS8888

©2025 ELECTRIFIED AUTOMATION LTD.  
REPRODUCTION OR TRANSMISSION OF DATA HEREIN IS FORBIDDEN WITHOUT WRITTEN PERMISSION FROM ELECTRIFIED AUTOMATION LTD.

DOCUMENT TYPE **ASSEMBLY DRAWING**

DOCUMENT STATUS **PRODUCTION APPROVED**

STRICTLY NO DEVIATION FROM DRAWING PERMISSABLE WITHOUT APPROVED CONCEPTION FROM ELECTRIFIED AUTOMATION

SHEET **2 OF 2**

**A3**