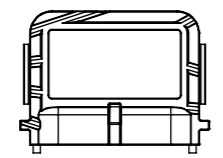


MOTOR TYPE	EA-193-80-10A+		ENCODER:	SUPERSEAL 1.5 SOCKET	CUSTOMER APPROVAL:
VOLTAGE	VDC	48	 <p>PIN 1: 5V PIN 2: TEMP PIN 3: SIN PIN 4: COS PIN 5: GND PIN 6: SHIELD</p>	MATING PLUG P/N:	NAME:
IEC DUTY	S2	60		282090-1	DATE:
RATED POWER	KW	10		MATING PIN P/N:	SIGNED:
RATED SPEED	RPM	4000		183035-1	
RATED FREQ.	HZ	333			
IP RATING*	IP	65			
INSUL. CLASS	-	200			
SENSOR CYCLES	CPR	5			
TEMP SENSOR	PT1000	CLASS B			

- NOTES:
- SHAFT ROTATES CW, WHEN VIEWED FROM DRIVE END, WHEN COSINE SIGNAL LEADS SINE SIGNAL BY 90 DEGREES
 - SHAFT ROTATES CW, WHEN VIEWED FROM DRIVE END, WHEN U-V-W WIRED PER DIAGRAM
 - TERMINAL NUTS: TORQUE TO 15Nm
 - SEE MANUAL FOR RECOMMENDED TORQUE VALUES OF MOTOR FASTENERS
 - ESTIMATED ROTATIONAL MOMENT OF INERTIA: 11025 kg/mm²
 - * IP RATINGS - SEE USER MANUAL FOR FURTHER DETAILS

REV	CHANGE REF	DESCRIPTION	DRAWN BY	CHECKED	APPROVED	DATE
1	ECN069	PRODUCTION RELEASE	EB	SD	SD	29/05/2025

TITLE: **193-80-10A+, SAE B, Z13, 48V, IP65**

DWG NO. **2019-002-084**

REV **1**

SCALE **1:2**

electrified motors

ELECTRIFIED AUTOMATION LTD,
UNIT 4 BEECH BUSINESS PARK,
BRIDGWATER,
SOMERSET, TA6 4FF, UNITED KINGDOM

MASS (APPROX.) **19.31kg**

IF IN DOUBT - ASK ALL DIMENSION IN MM CONFORMS TO BS8888

©2025 ELECTRIFIED AUTOMATION LTD. REPRODUCTION OR TRANSMISSION OF DATA HEREIN IS FORBIDDEN WITHOUT WRITTEN PERMISSION FROM ELECTRIFIED AUTOMATION LTD.

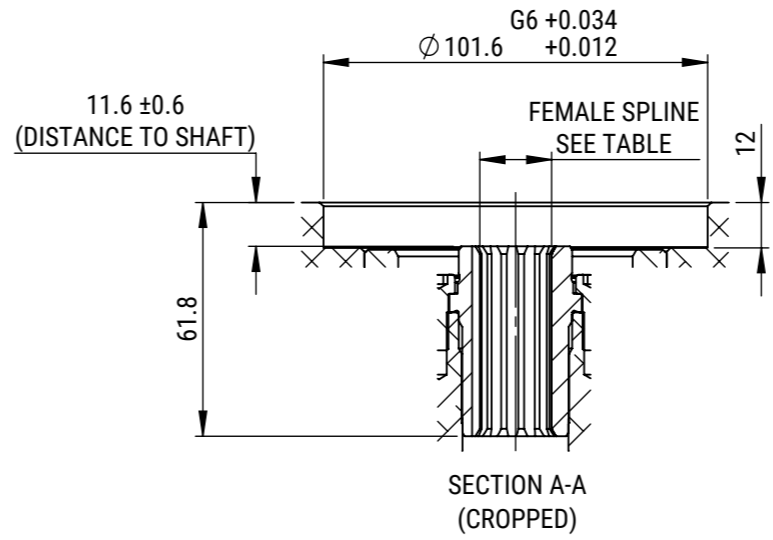
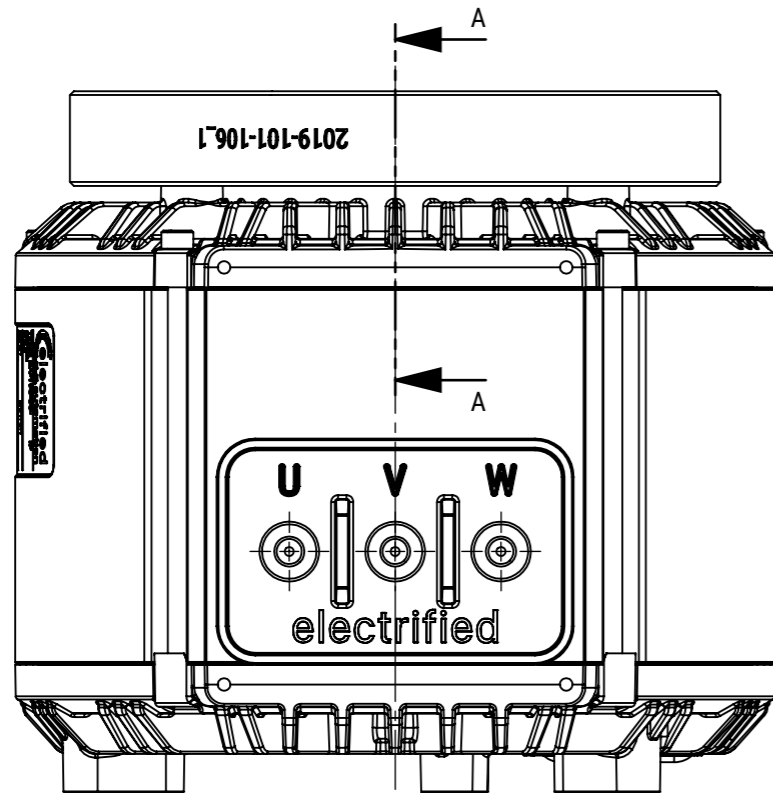
STRICTLY NO DEVIATION FROM DRAWING PERMISSABLE WITHOUT APPROVED CONCESSION FROM ELECTRIFIED AUTOMATION

DOCUMENT TYPE **ASSEMBLY DRAWING**

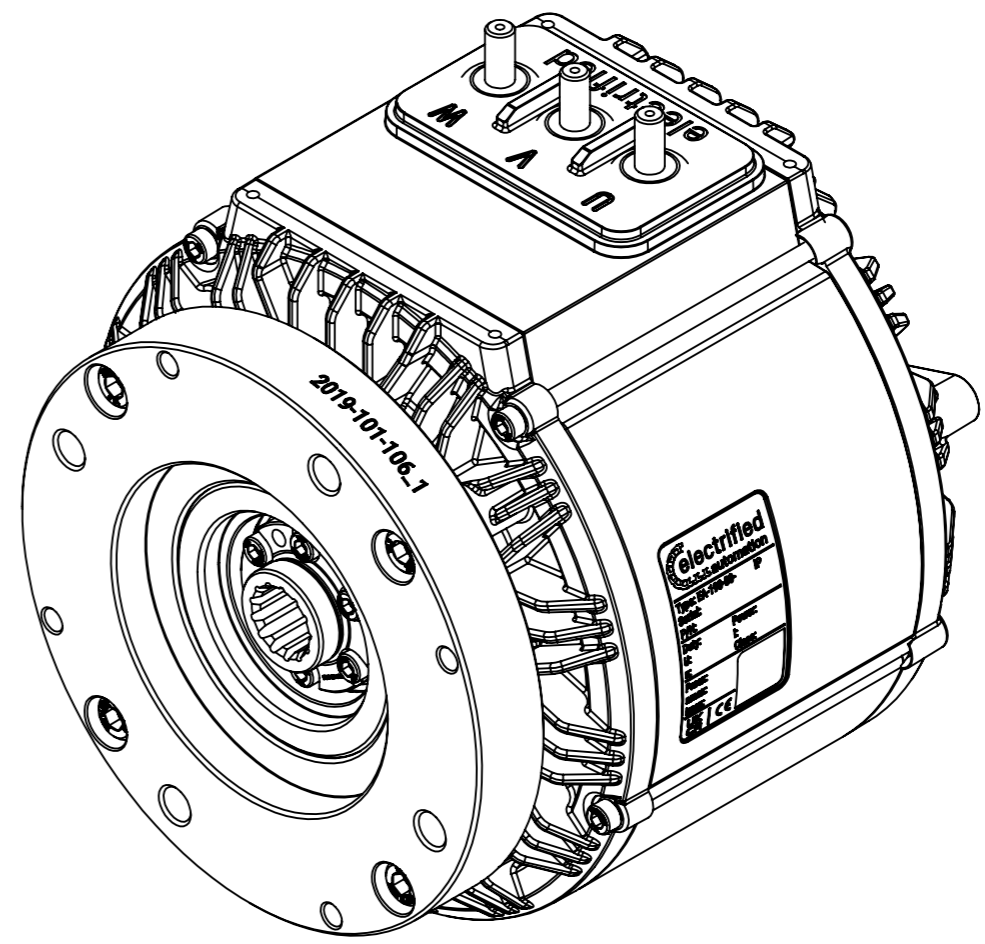
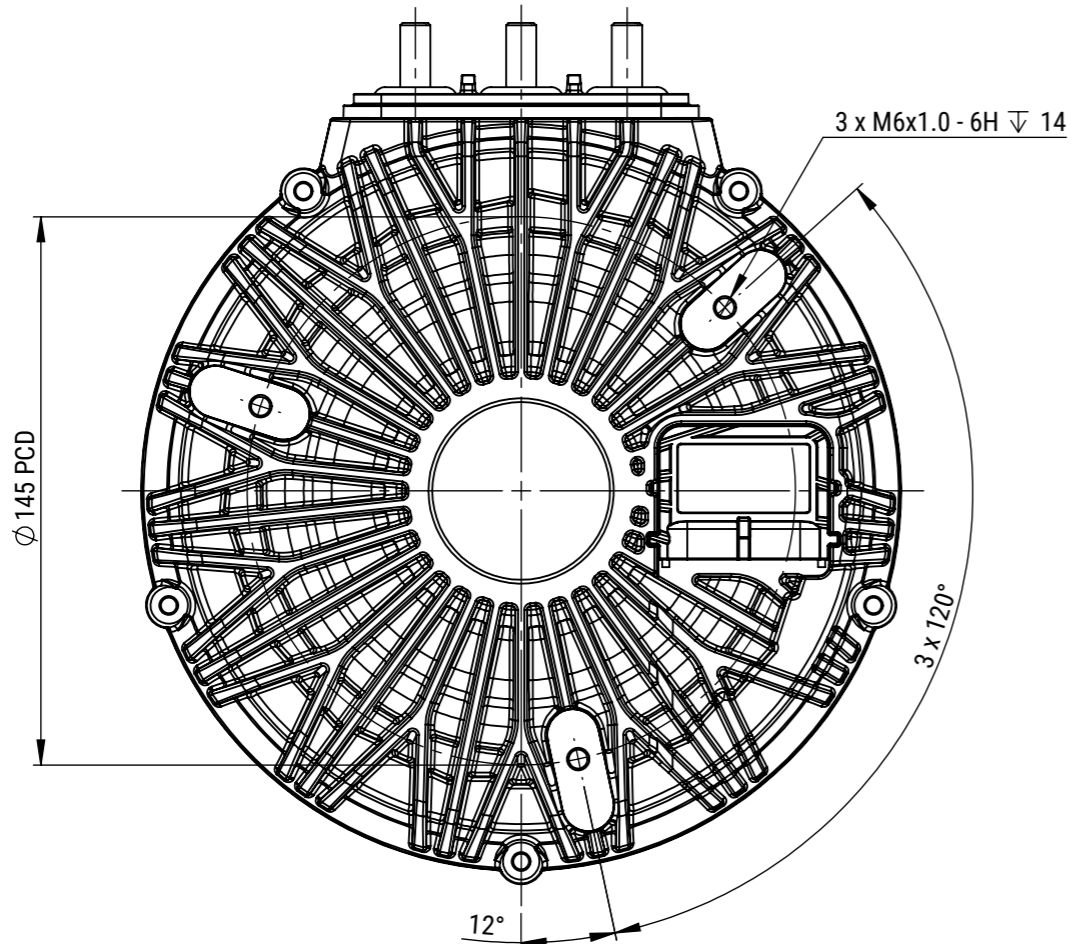
DOCUMENT STATUS **PRODUCTION APPROVED**

SHEET **1 OF 2**

A3



INTERNAL INVOLUTE SPLINE DATA		
SPEC.	ANSI B92.1 1996	
SPLINE TYPE :	FLAT ROOT / SIDE FIT	
CLASS		5
NUMBER OF TEETH		13
SPLINE PITCH		16/32
PRESSURE ANGLE	°	30
BASE DIAMETER (REF)	MM	17.873
PITCH DIAMETER (REF)	MM	20.638
MAJOR DIAMETER (MAX)	MM	22.885
FORM DIAMETER	MM	22.327
MINOR DIAMETER	MM	19.279
		19.152
MIN. EFF. CIRC. SPACE WIDTH (Sv)	MM	2.494
MAX. ACTUAL SPACE WIDTH (Sv)		2.560
MEASUREMENT BETWEEN PINS	MM	16.589
		16.540
PIN DIAMETER	MM	2.743



ISOMETRIC VIEW

REV	CHANGE REF	DESCRIPTION	DRAWN BY	CHECKED	APPROVED	DATE
1	ECN069	PRODUCTION RELEASE	EB	SD	SD	29/05/2025

TITLE: **193-80-10A+, SAE B, Z13, 48V, IP65**

DWG NO. **2019-002-084**

REV **1**

SCALE **1:2**

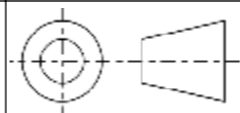
MASS (APPROX.) **19.31kg**



ELECTRIFIED AUTOMATION LTD,
UNIT 4 BEECH BUSINESS PARK,
BRIDGWATER,
SOMERSET, TA6 4FF, UNITED KINGDOM

©2025 ELECTRIFIED AUTOMATION LTD.
REPRODUCTION OR TRANSMISSION OF DATA HEREIN IS
FORBIDDEN WITHOUT WRITTEN PERMISSION FROM
ELECTRIFIED AUTOMATION LTD.

STRICTLY NO DEVIATION FROM
DRAWING PERMISSABLE WITHOUT
APPROVED CONCEPTION FROM
ELECTRIFIED AUTOMATION



IF IN DOUBT - ASK
ALL DIMENSION IN MM
CONFORMS TO BS8888

DOCUMENT TYPE ASSEMBLY DRAWING	DOCUMENT STATUS PRODUCTION APPROVED	SHEET 2 OF 2	A3
--	---	------------------------	-----------