

MOTOR TYPE	EA-193-80-13A+	
VOLTAGE	VDC	48
IEC DUTY	S2	60
RATED POWER	KW	8
RATED SPEED	RPM	2500
RATED FREQ.	HZ	208
IP RATING*	IP	65
INSUL. CLASS	-	200
SENSOR CYCLES	CPR	5
TEMP SENSOR	PT1000	CLASS B

ENCODER:	SUPERSEAL 1.5 SOCKET
	MATING PLUG P/N: 282090-1
	MATING PIN P/N: 183035-1

CUSTOMER APPROVAL:
NAME:
DATE:
SIGNED:

- NOTES:
- SHAFT ROTATES CW, WHEN VIEWED FROM DRIVE END, WHEN COSINE SIGNAL LEADS SINE SIGNAL BY 90 DEGREES
 - SHAFT ROTATES CW, WHEN VIEWED FROM DRIVE END, WHEN U-V-W WIRED PER DIAGRAM
 - TERMINAL NUTS: TORQUE TO 15Nm
 - SEE MANUAL FOR RECOMMENDED TORQUE VALUES OF MOTOR FASTENERS
 - ESTIMATED ROTATIONAL MOMENT OF INERTIA: 11025 kg/mm²
 - *IP RATINGS - SEE USER MANUAL FOR FURTHER DETAILS

REV	CHANGE REF	DESCRIPTION	DRAWN BY	CHECKED	APPROVED	DATE
1	ECN069	PRODUCTION APPROVED	EB	SD	SD	29/05/2025

TITLE:
**193-080-13A+, SAE B,
Z13, 48V, IP65**

DWG NO.
2019-002-085

REV
1

SCALE
1:2

electrified motors

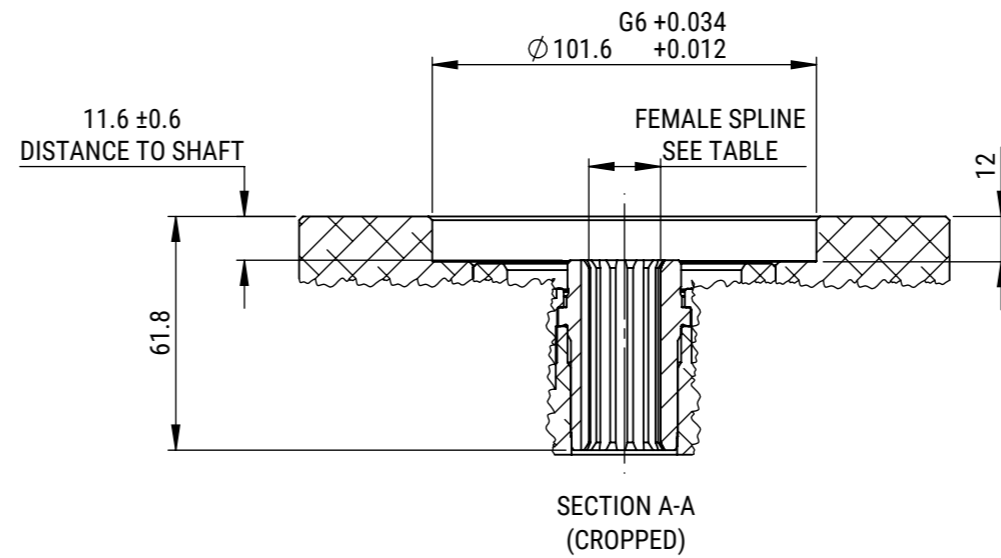
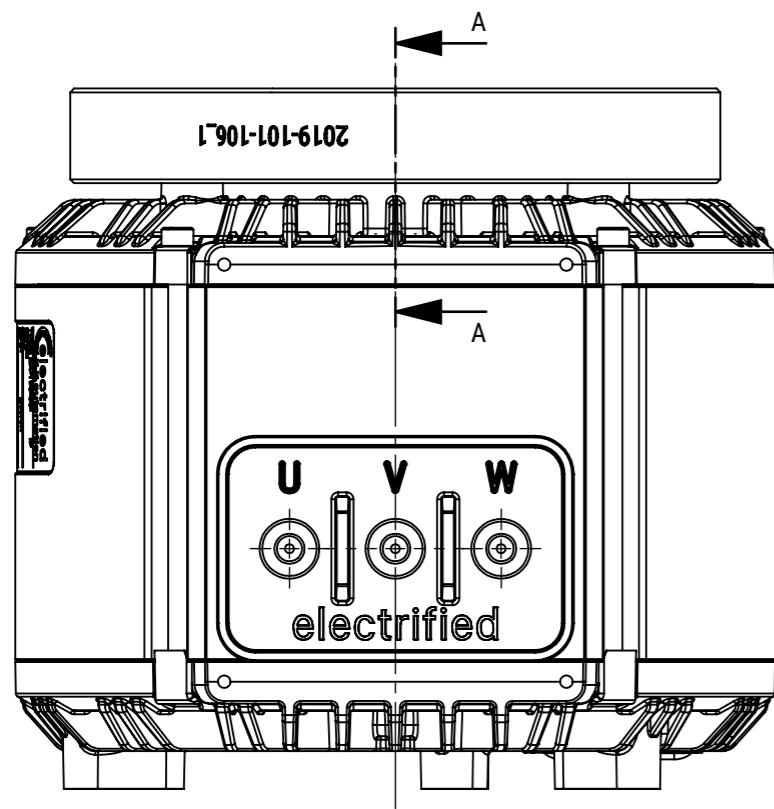
ELECTRIFIED AUTOMATION LTD,
UNIT 4 BEECH BUSINESS PARK,
BRIDGWATER,
SOMERSET, TA6 4FF, UNITED KINGDOM

©2025 ELECTRIFIED AUTOMATION LTD.
REPRODUCTION OR TRANSMISSION OF DATA HEREIN IS
FORBIDDEN WITHOUT WRITTEN PERMISSION FROM
ELECTRIFIED AUTOMATION LTD.

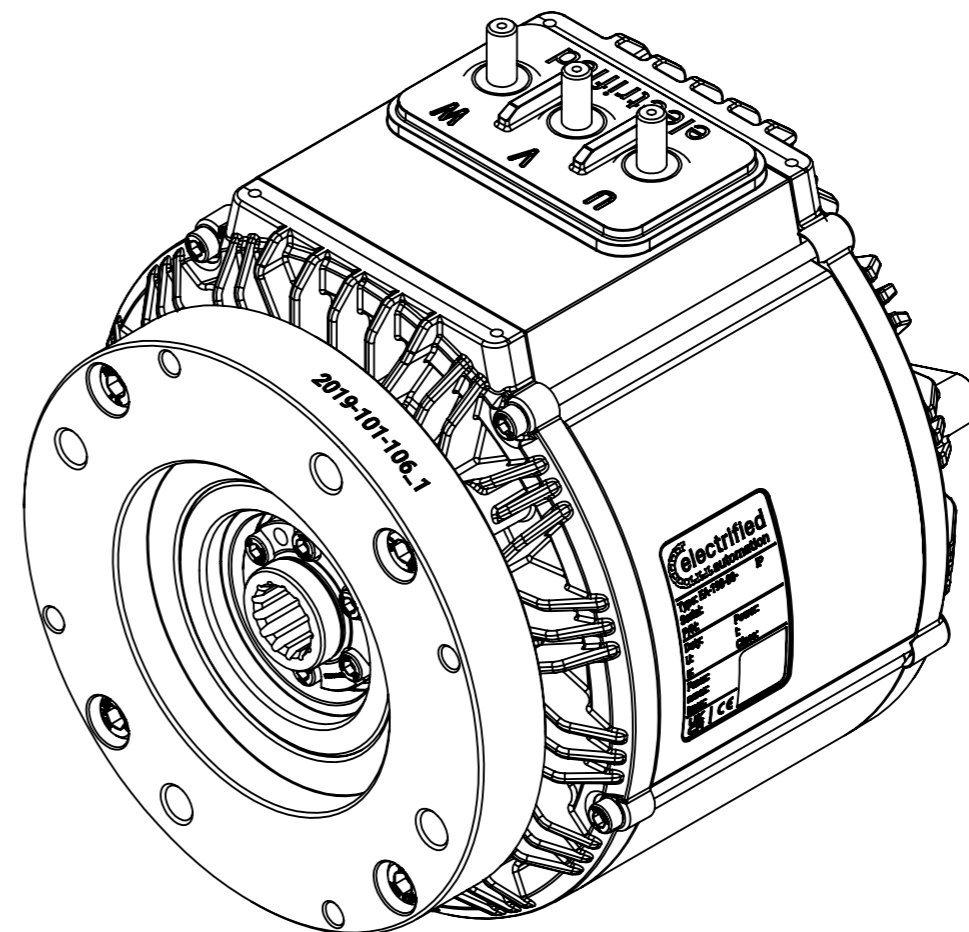
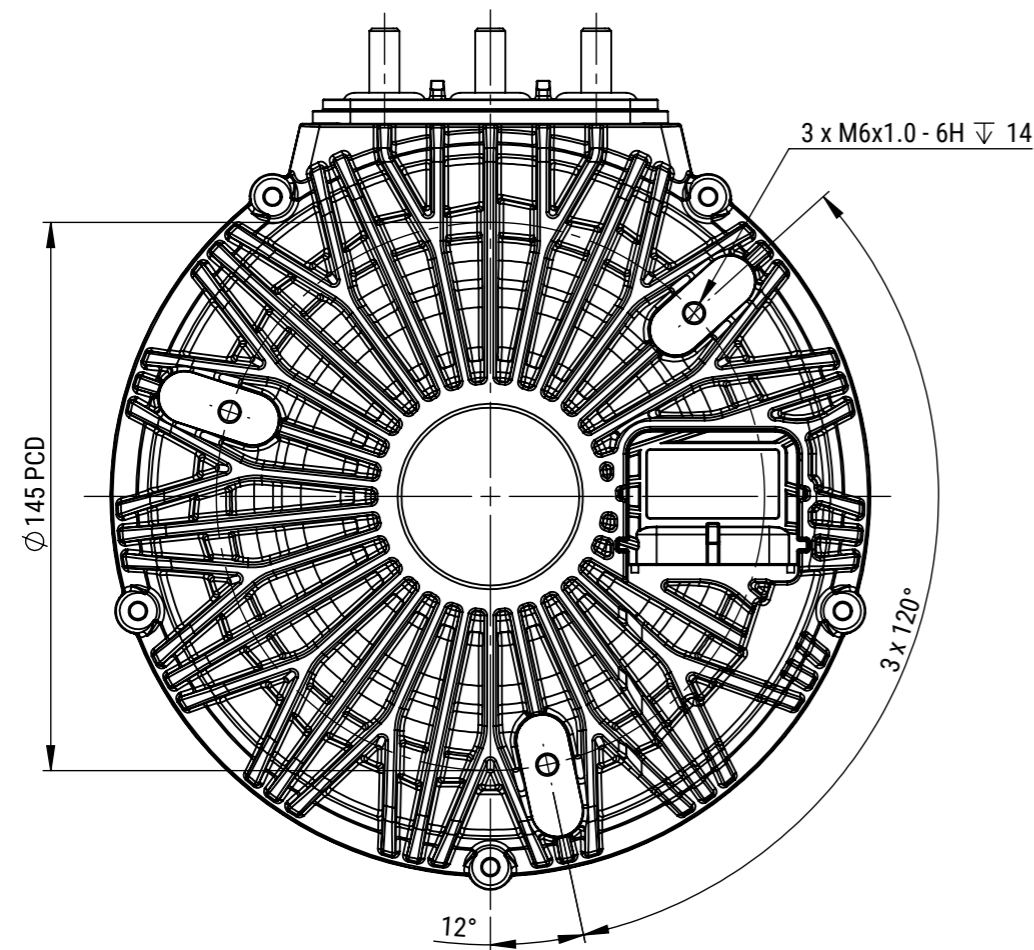
STRICTLY NO DEVIATION FROM
DRAWING PERMISSABLE WITHOUT
APPROVED CONCESSION FROM
ELECTRIFIED AUTOMATION

IF IN DOUBT - ASK
ALL DIMENSION IN MM
CONFORMS TO BS8888

DOCUMENT TYPE	DOCUMENT STATUS	SHEET
ASSEMBLY DRAWING	PRODUCTION APPROVED	1 OF 2
		A3



INTERNAL INVOLUTE SPLINE DATA		
SPEC.	ANSI B92.1 1996	
SPLINE TYPE :	FLAT ROOT / SIDE FIT	
CLASS		5
NUMBER OF TEETH		13
SPLINE PITCH		16/32
PRESSURE ANGLE	°	30
BASE DIAMETER (REF)	MM	17.873
PITCH DIAMETER (REF)	MM	20.638
MAJOR DIAMETER (MAX)	MM	22.885
FORM DIAMETER	MM	22.327
MINOR DIAMETER	MM	19.279
		19.152
MIN. EFF. CIRC. SPACE WIDTH (Sv)	MM	2.494
MAX. ACTUAL SPACE WIDTH (Sv)		2.560
MEASUREMENT BETWEEN PINS	MM	16.589
		16.540
PIN DIAMETER	MM	2.743



ISOMETRIC VIEW

REV	CHANGE REF	DESCRIPTION	DRAWN BY	CHECKED	APPROVED	DATE
1	ECN069	PRODUCTION APPROVED	EB	SD	SD	29/05/2025

TITLE: **193-080-13A+, SAE B, Z13, 48V, IP65**

DWG NO. **2019-002-085**

REV **1**

SCALE **1:2**

MASS (APPROX.) **19.31kg**

ELECTRIFIED AUTOMATION LTD,
UNIT 4 BEECH BUSINESS PARK,
BRIDGWATER,
SOMERSET, TA6 4FF, UNITED KINGDOM

©2025 ELECTRIFIED AUTOMATION LTD.
REPRODUCTION OR TRANSMISSION OF DATA HEREIN IS
FORBIDDEN WITHOUT WRITTEN PERMISSION FROM
ELECTRIFIED AUTOMATION LTD.

STRICTLY NO DEVIATION FROM
DRAWING PERMISSABLE WITHOUT
APPROVED CONCEPTION FROM
ELECTRIFIED AUTOMATION

IF IN DOUBT - ASK
ALL DIMENSION IN MM
CONFORMS TO BS8888

DOCUMENT TYPE
**ASSEMBLY
DRAWING**

DOCUMENT STATUS
**PRODUCTION
APPROVED**

SHEET
2 OF 2

A3