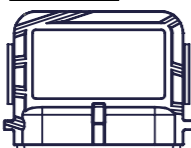


| | | | | | |
|---------------|----------------|---------|-------------------------------------------------------------------------------------|----------------------|--------------------|
| MOTOR TYPE | EA-193-80-10A+ | | ENCODER: | SUPERSEAL 1.5 SOCKET | CUSTOMER APPROVAL: |
| VOLTAGE | VDC | 48 |  | MATING PLUG P/N: | NAME: |
| IEC DUTY | S2 | 60 | | 282090-1 | DATE: |
| RATED POWER | KW | 10 | PIN 1: 5V PIN 2: TEMP PIN 3: SIN PIN 4: COS PIN 5: GND PIN 6: SHIELD | MATING PIN P/N: | SIGNED: |
| RATED SPEED | RPM | 4000 | | 183035-1 | |
| RATED FREQ. | HZ | 333 | | | |
| IP RATING* | IP | 65 | | | |
| INSUL. CLASS | - | 200 | | | |
| SENSOR CYCLES | CPR | 5 | | | |
| TEMP SENSOR | PT1000 | CLASS B | | | |


NOTES:

- KEYWAY DIMENSIONS TO ISO/R773
- SHAFT ROTATES CW, WHEN VIEWED FROM DRIVE END, WHEN COSINE SIGNAL LEADS SINE SIGNAL BY 90 DEGREES
- SHAFT ROTATES CW, WHEN VIEWED FROM DRIVE END, WHEN U-V-W WIRED PER DIAGRAM
- TERMINAL NUTS: TORQUE TO 15Nm
- SEE MANUAL FOR RECOMMENDED TORQUE VALUES OF MOTOR FASTENERS
- ESTIMATED ROTATIONAL MOMENT OF INERTIA: 11064 kg/mm²
- * IP RATINGS - SEE USER MANUAL FOR FURTHER DETAILS

| REV | CHANGE REF | DESCRIPTION | DRAWN BY | CHECKED | APPROVED | DATE |
|-----|------------|---------------------|----------|---------|----------|------------|
| 1 | ECN069 | PRODUCTION APPROVED | EB | SD | SD | 29/05/2025 |

TITLE: **193-080-10A+,
B14/100, 48V, IP65**

DWG NO. **2019-002-113** REV **1** SCALE **1:2**

 ELECTRIFIED AUTOMATION LTD,
UNIT 4 BEECH BUSINESS PARK,
BRIDGWATER,
SOMERSET, TA6 4FF, UNITED KINGDOM

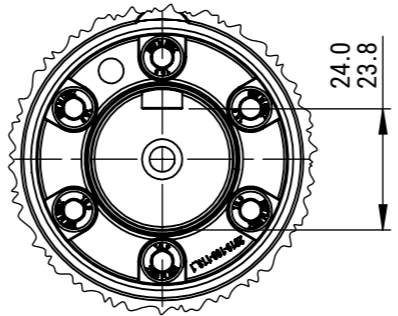
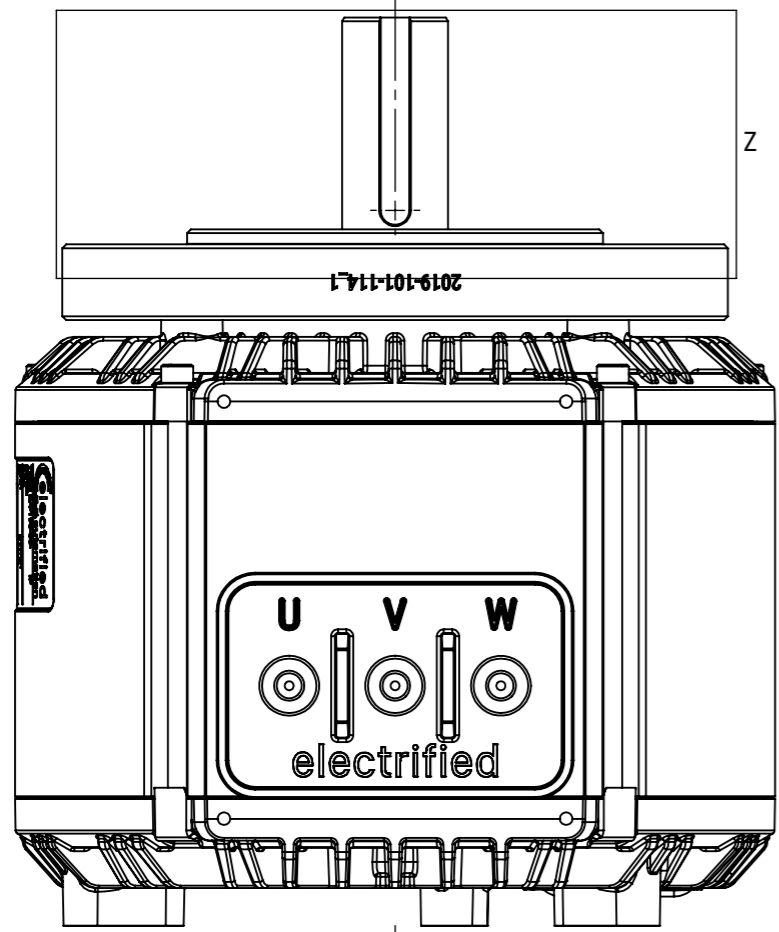
MASS (APPROX.) **19.73kg**

IF IN DOUBT - ASK ALL DIMENSION IN MM CONFORMS TO BS8888

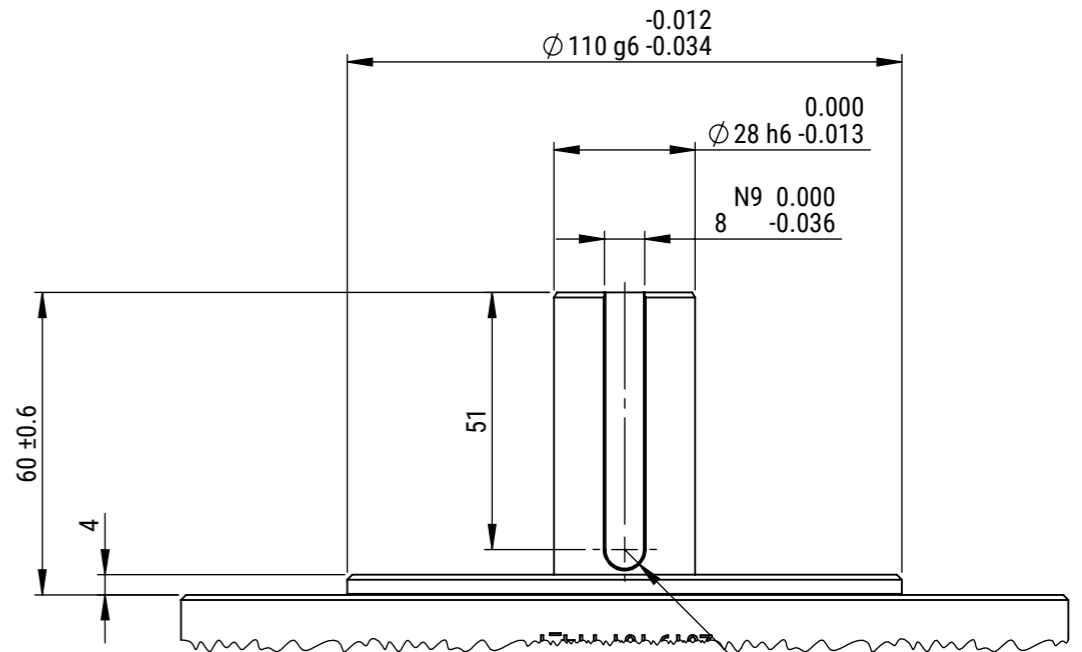
©2025 ELECTRIFIED AUTOMATION LTD.
REPRODUCTION OR TRANSMISSION OF DATA HEREIN IS FORBIDDEN WITHOUT WRITTEN PERMISSION FROM ELECTRIFIED AUTOMATION LTD.

STRICTLY NO DEVIATION FROM DRAWING PERMISSABLE WITHOUT APPROVED CONCESSION FROM ELECTRIFIED AUTOMATION

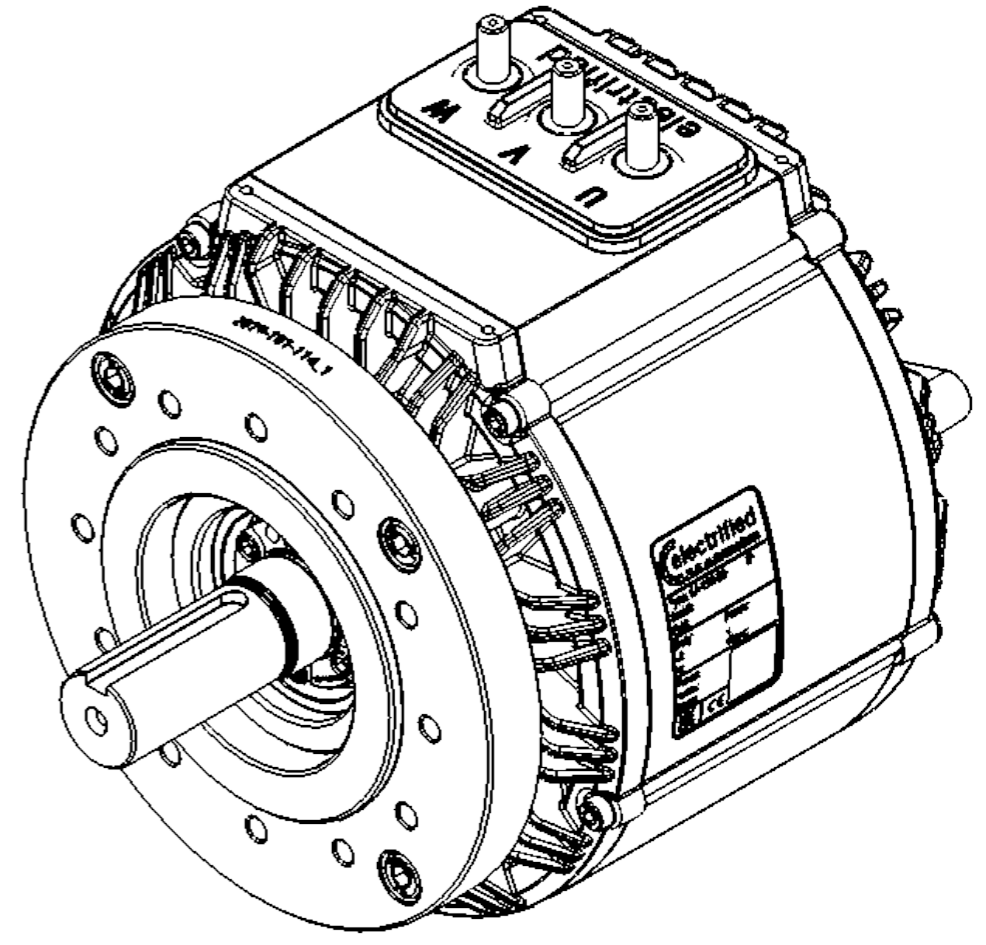
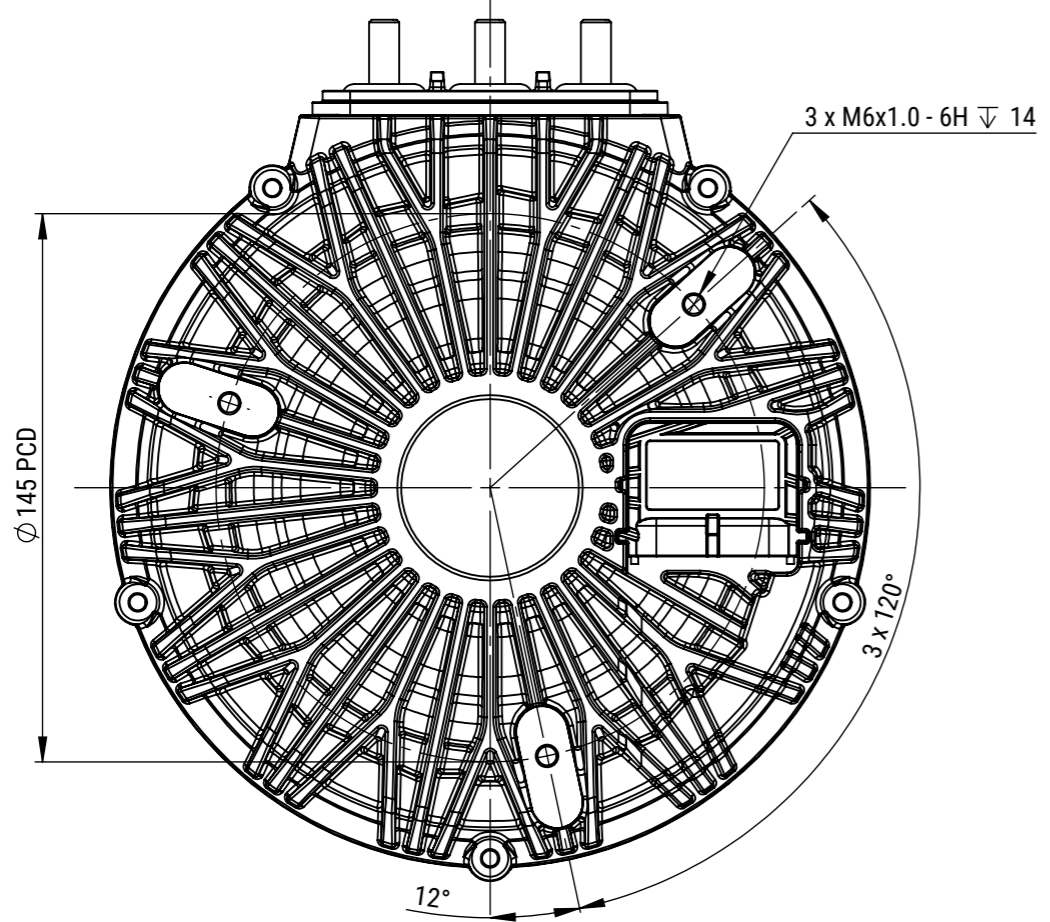
DOCUMENT TYPE **ASSEMBLY DRAWING** DOCUMENT STATUS **PRODUCTION APPROVED** SHEET **1 OF 2** **A3**



DETAIL Y
SCALE 2 : 3



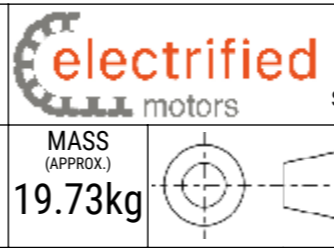
DETAIL Z
SCALE 2 : 3



ISOMETRIC VIEW

| REV | CHANGE REF | DESCRIPTION | DRAWN BY | CHECKED | APPROVED | DATE |
|-----|------------|---------------------|----------|---------|----------|------------|
| 1 | ECN069 | PRODUCTION APPROVED | EB | SD | SD | 29/05/2025 |

| | | | | | | |
|----------------------------------------------------|-----|-------|----------------|--|--|--|
| TITLE: 193-080-10A+, B14/100, 48V, IP65 | | | | | | |
| DWG NO. | REV | SCALE | MASS (APPROX.) | | | |
| 2019-002-113 | 1 | 1:2 | 19.73kg | | | |



ELECTRIFIED AUTOMATION LTD,
UNIT 4 BEECH BUSINESS PARK,
BRIDGWATER,
SOMERSET, TA6 4FF, UNITED KINGDOM

©2025 ELECTRIFIED AUTOMATION LTD.
REPRODUCTION OR TRANSMISSION OF DATA HEREIN IS
FORBIDDEN WITHOUT WRITTEN PERMISSION FROM
ELECTRIFIED AUTOMATION LTD.

STRICTLY NO DEVIATION FROM
DRAWING PERMISSABLE WITHOUT
APPROVED CONCESSION FROM
ELECTRIFIED AUTOMATION

IF IN DOUBT - ASK
ALL DIMENSION IN MM
CONFORMS TO BS8888

DOCUMENT TYPE
**ASSEMBLY
DRAWING**

DOCUMENT STATUS
**PRODUCTION
APPROVED**

SHEET
2 OF 2

A3