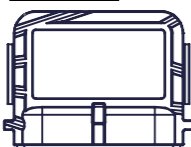


MOTOR TYPE	EA-193-40-18A+	
VOLTAGE	VDC	48
IEC DUTY	S2	60
RATED POWER	KW	5.5
RATED SPEED	RPM	4000
RATED FREQ.	HZ	333
IP RATING*	IP	65
INSUL. CLASS	-	200
SENSOR CYCLES	CPR	5
TEMP SENSOR	PT1000	CLASS B


ENCODER:	SUPERSEAL 1.5 SOCKET
	MATING PLUG P/N: 282090-1
PIN 1: 5V PIN 2: TEMP PIN 3: SIN PIN 4: COS PIN 5: GND PIN 6: SHIELD	MATING PIN P/N: 183035-1

CUSTOMER APPROVAL:
NAME:
DATE:
SIGNED:

- NOTES:**
- KEYWAY DIMENSIONS TO ISO/R773
 - SHAFT ROTATES CW, WHEN VIEWED FROM DRIVE END, WHEN COSINE SIGNAL LEADS SINE SIGNAL BY 90 DEGREES
 - SHAFT ROTATES CW, WHEN VIEWED FROM DRIVE END, WHEN U-V-W WIRED PER DIAGRAM
 - TERMINAL NUTS: TORQUE TO 15Nm
 - SEE MANUAL FOR RECOMMENDED TORQUE VALUES OF MOTOR FASTENERS
 - ESTIMATED ROTATIONAL MOMENT OF INERTIA: 5639 kg/mm²
 - * IP RATINGS - SEE USER MANUAL FOR FURTHER DETAILS

REV	CHANGE REF	DESCRIPTION	DRAWN BY	CHECKED	APPROVED	DATE
1	ECN069	PRODUCTION RELEASE	EB	SD	SD	28/05/2025

TITLE:	193-040-18A+, B14/100, 48V, IP65
DWG NO.	2019-002-114
REV	1
SCALE	1:2
MASS (APPROX.)	12.63kg

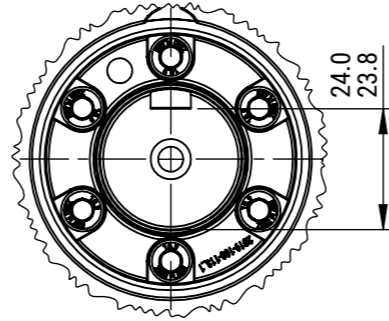
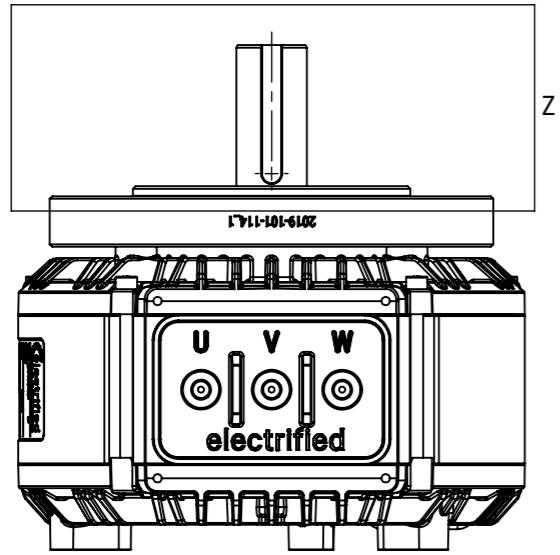


ELECTRIFIED AUTOMATION LTD,
UNIT 4 BEECH BUSINESS PARK,
BRIDGWATER,
SOMERSET, TA6 4FF, UNITED KINGDOM

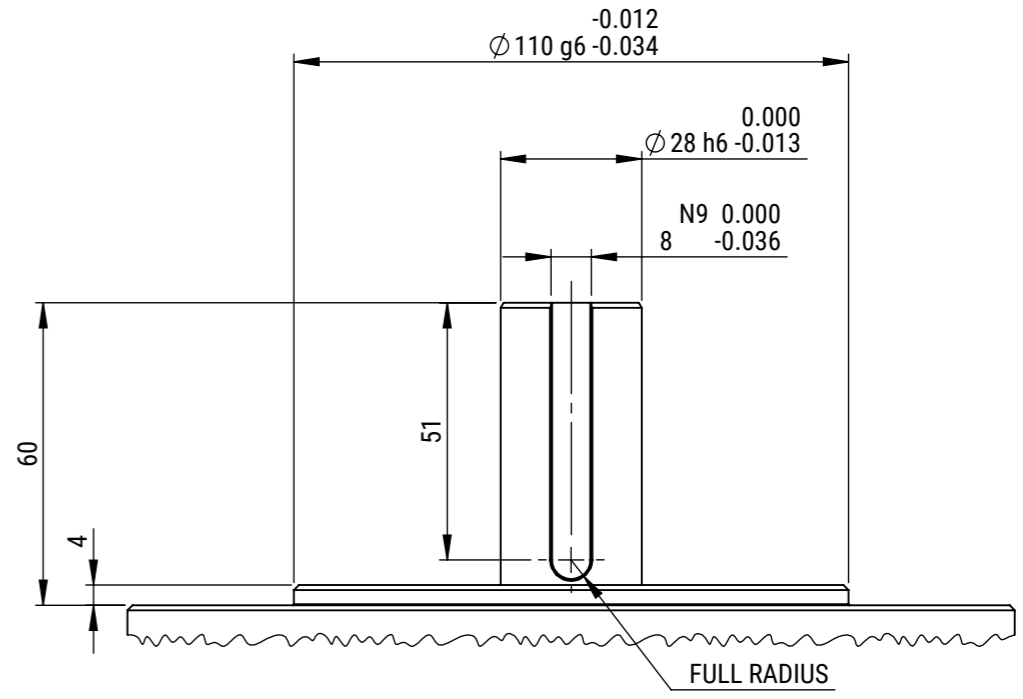
IF IN DOUBT - ASK
ALL DIMENSION IN MM
CONFORMS TO BS8888

©2025 ELECTRIFIED AUTOMATION LTD. REPRODUCTION OR TRANSMISSION OF DATA HEREIN IS FORBIDDEN WITHOUT WRITTEN PERMISSION FROM ELECTRIFIED AUTOMATION LTD.	DOCUMENT TYPE ASSEMBLY DRAWING	DOCUMENT STATUS PRODUCTION APPROVED
---	--	---

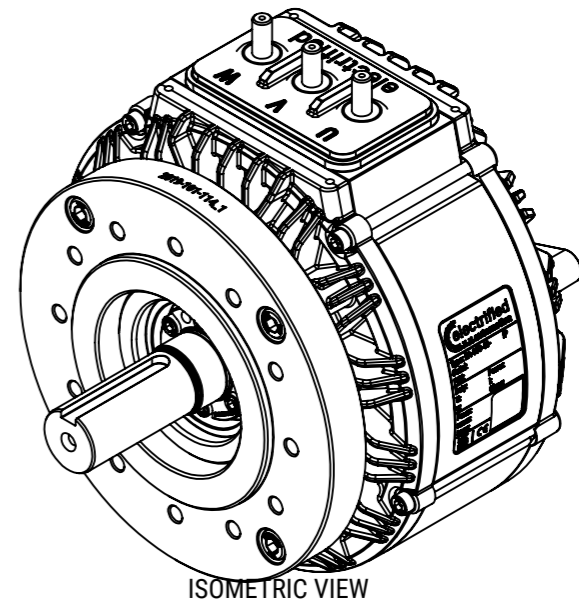
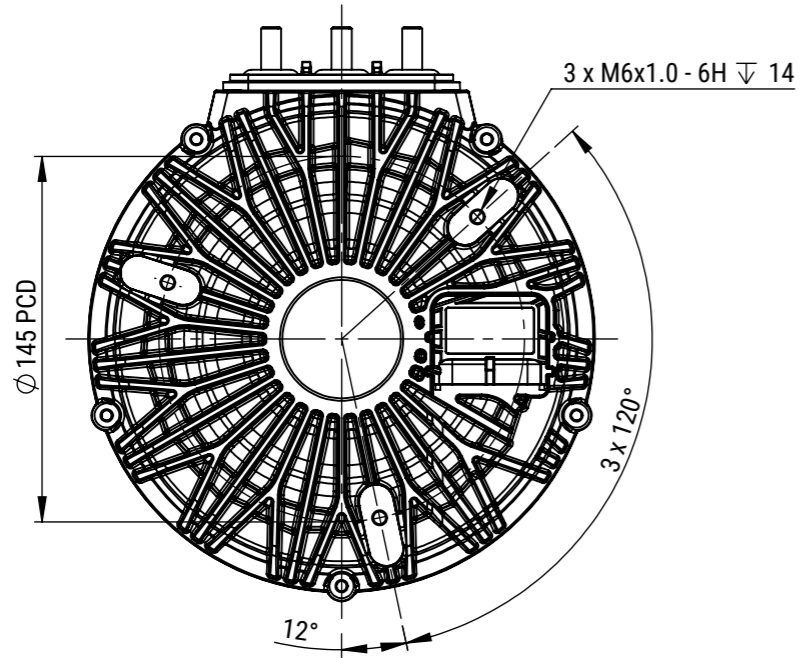
STRICTLY NO DEVIATION FROM DRAWING PERMISSABLE WITHOUT APPROVED CONCESSION FROM ELECTRIFIED AUTOMATION	SHEET 1 OF 2	A3
---	-----------------	-----------



DETAIL Y
SCALE 2 : 3



DETAIL Z
SCALE 2 : 3



REV	CHANGE REF	DESCRIPTION	DRAWN BY	CHECKED	APPROVED	DATE
1	ECN069	PRODUCTION RELEASE	EB	SD	SD	28/05/2025

TITLE: 193-040-18A+, B14/100, 48V, IP65						
DWG NO.	REV	SCALE	MASS (APPROX.)			
2019-002-114	1	1:3	12.63kg			

electrified motors

ELECTRIFIED AUTOMATION LTD,
UNIT 4 BEECH BUSINESS PARK,
BRIDGWATER,
SOMERSET, TA6 4FF, UNITED KINGDOM

IF IN DOUBT - ASK
ALL DIMENSION IN MM
CONFORMS TO BS8888

©2025 ELECTRIFIED AUTOMATION LTD.
REPRODUCTION OR TRANSMISSION OF DATA HEREIN IS
FORBIDDEN WITHOUT WRITTEN PERMISSION FROM
ELECTRIFIED AUTOMATION LTD.

DOCUMENT TYPE
**ASSEMBLY
DRAWING**

DOCUMENT STATUS
**PRODUCTION
APPROVED**

STRICTLY NO DEVIATION FROM
DRAWING PERMISSABLE WITHOUT
APPROVED CONCESSION FROM
ELECTRIFIED AUTOMATION

SHEET
2 OF 2

A3