

Section	Page
Technical Data Machine	3
Technical Drawings Machine	4
Characteristics Machine – 560V	5
Characteristics Machine – 650V	6
Technical Data Inverter Set – 560V	7
Technical Data Inverter Set – 650V	8

Data, including specifications, contained within this document are summary in nature and subject to change at any time without notice and are intended for general information only. Call for latest revision. All brand names and product names referenced are trademarks, registered trademarks, or trade names of their respective holders.

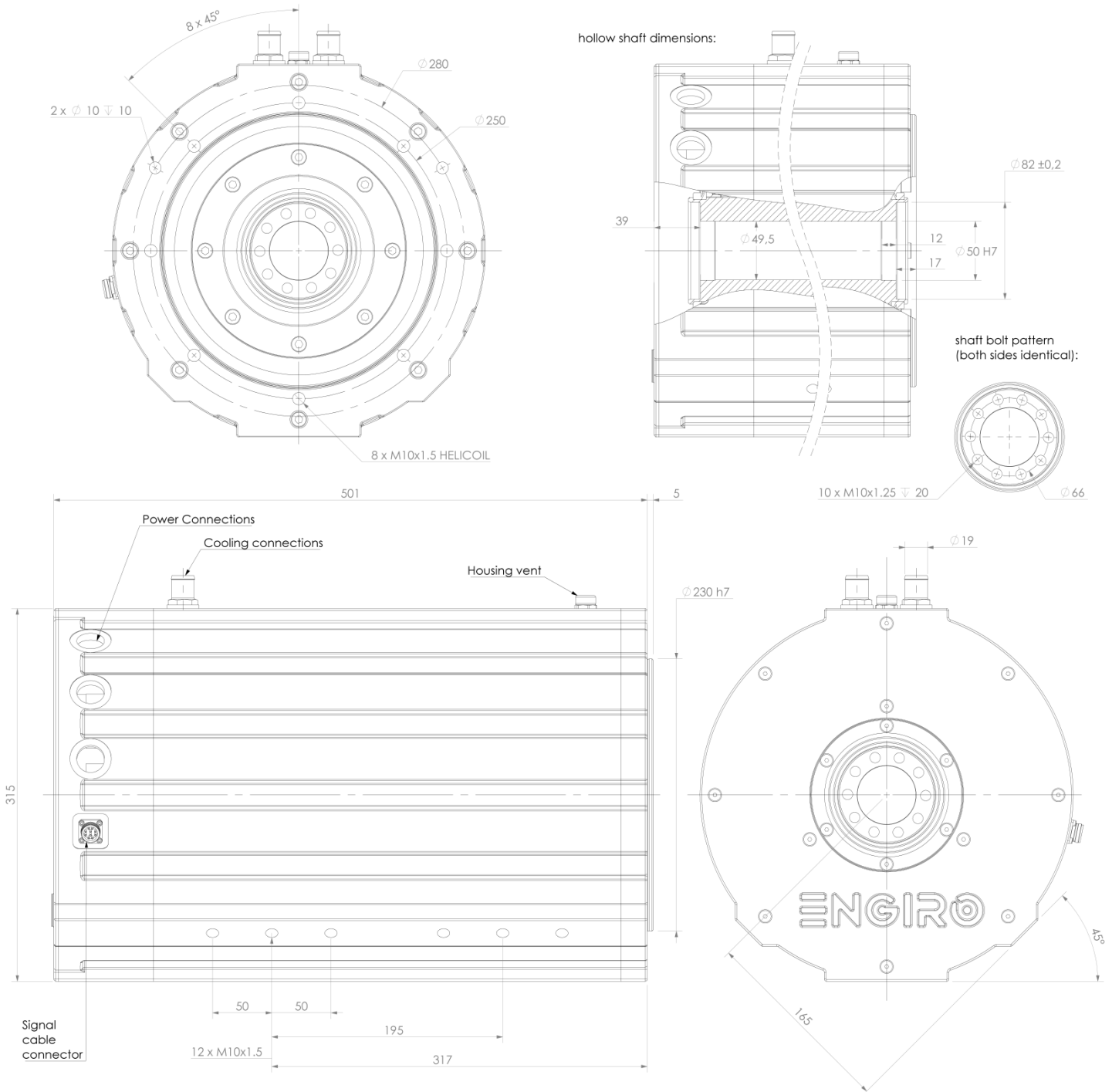
Nominal Operation (S1, cooling as specified below)					
Torque	T_{nom}	688	688	Nm	
Power	P_{nom}	115	134	kW	
Speed	n_{nom}	1600	1860	rpm	
Phase rms-current	I_{nom}	546	218	A	
Battery voltage (DC)	U_{nom}	560	650	V	
Electric frequency	$f_{el, nom}$	113	155	Hz	
Power factor	$\cos(\varphi)$	0.73	0.73		
Maximal Values (S2, 10s, cooling as specified below)					
Torque	T_{max}	1361	1361	Nm	
Power	P_{max}	221	258	kW	
Phase rms-current	I_{max}	546	546	A	
Battery voltage (DC)	U_{max}		750	V	
Speed	n_{max}		3740	rpm	
Electric frequency	$f_{el, max}$		312	Hz	
Electrical Data					
Number of phases			3		
Number of pole pairs			5		
Maximal efficiency			>96	%	
T/I constant ($I < I_{nom}$)			3.16	Nm/A _{rms}	
U/n constant (AC)		rms: 188.9	peak: 267.2	V/(1000rpm)	
K_e constant (AC)		rms: 0.361	peak: 0.510	V/(rad*s ⁻¹)	
Additional Data					
Weight (w/o cables)			137	kg	
Rotor moment of inertia			0.158	kg*m ²	
Protection category			IP65 / IP69k		
Maximal motor temperature			140	°C	
Allowed ambient temperature			-20 ... 45 ¹⁾	°C	
Cooling (medium, flow rate, inlet temperature, pressure)			water/glycol 50/50, 14 l/min, ≤ 45°C, ≤ 0.5 bar		
Temperature monitoring			1 x KTY84-130		
Type approval			CE, EN 60034		
Customs tariff number			8501 5381		
Connectors					
Power terminals			3 x M25 cable gland		
Signal connectors			M16, 10 Pin		
Cooling connectors			2 x 3/4" / 19 mm		

¹⁾ other range on request

Data, including specifications, contained within this document are summary in nature and subject to change at any time without notice and are intended for general information only. Call for latest revision. All brand names and product names referenced are trademarks, registered trademarks, or trade names of their respective holders.

Available Type Variants

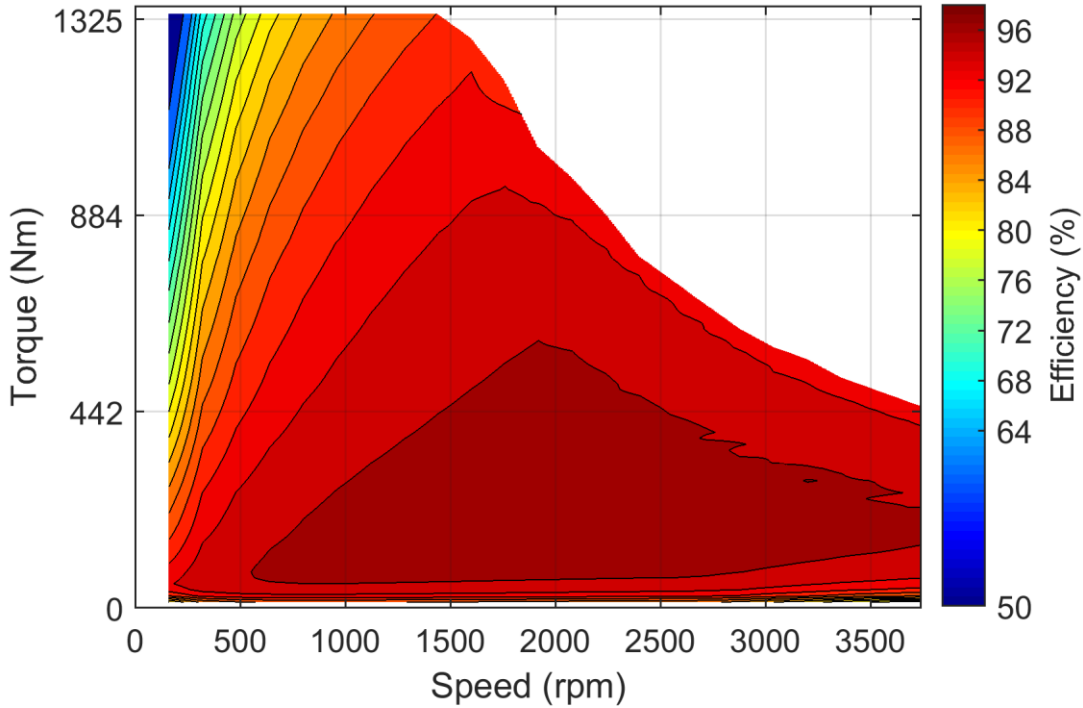
type number	A: flange	B: shaft	C: position sensor
260W-25018-	S: standard	F: hollow shaft with two screw flanges	R: resolver
			N: none



Data, including specifications, contained within this document are summary in nature and subject to change at any time without notice and are intended for general information only. Call for latest revision. All brand names and product names referenced are trademarks, registered trademarks, or trade names of their respective holders.

Simulated Efficiency of Motor Application

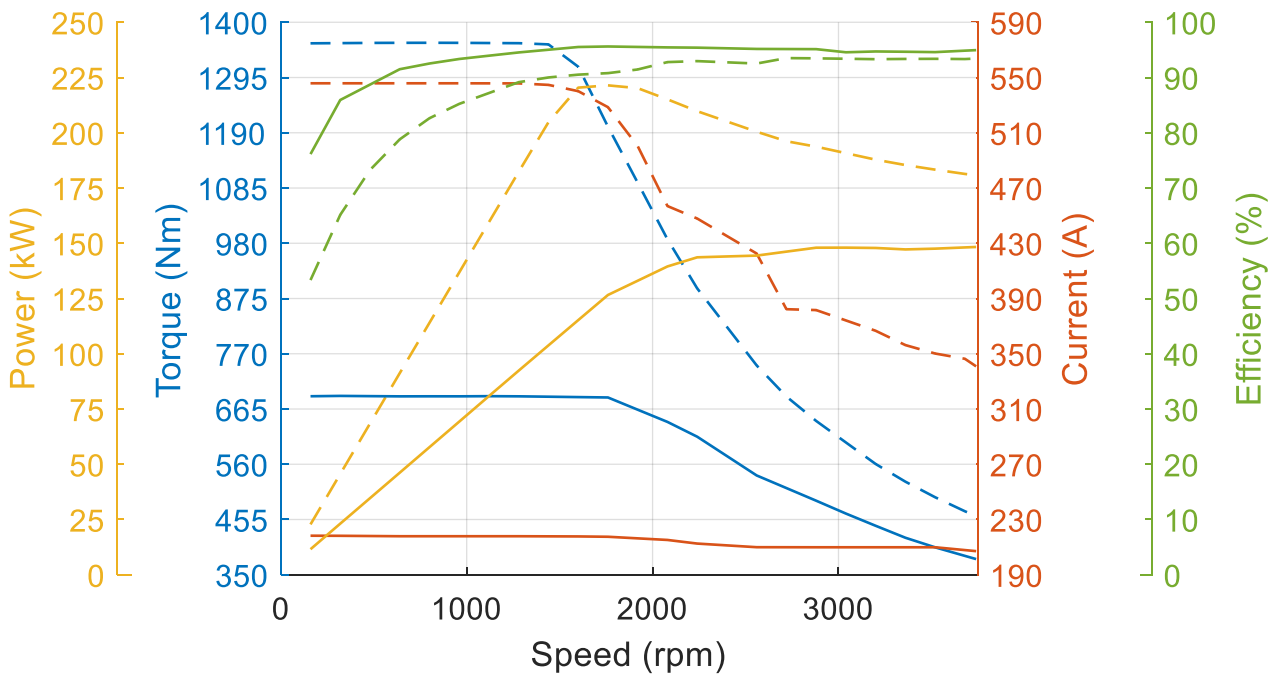
(electric machine only; $U_{nom} = 560\text{ V}$; machine at $100\text{ }^\circ\text{C}$;)



Simulated Characteristic Motor Parameters

$U_{nom} = 560\text{ V}$

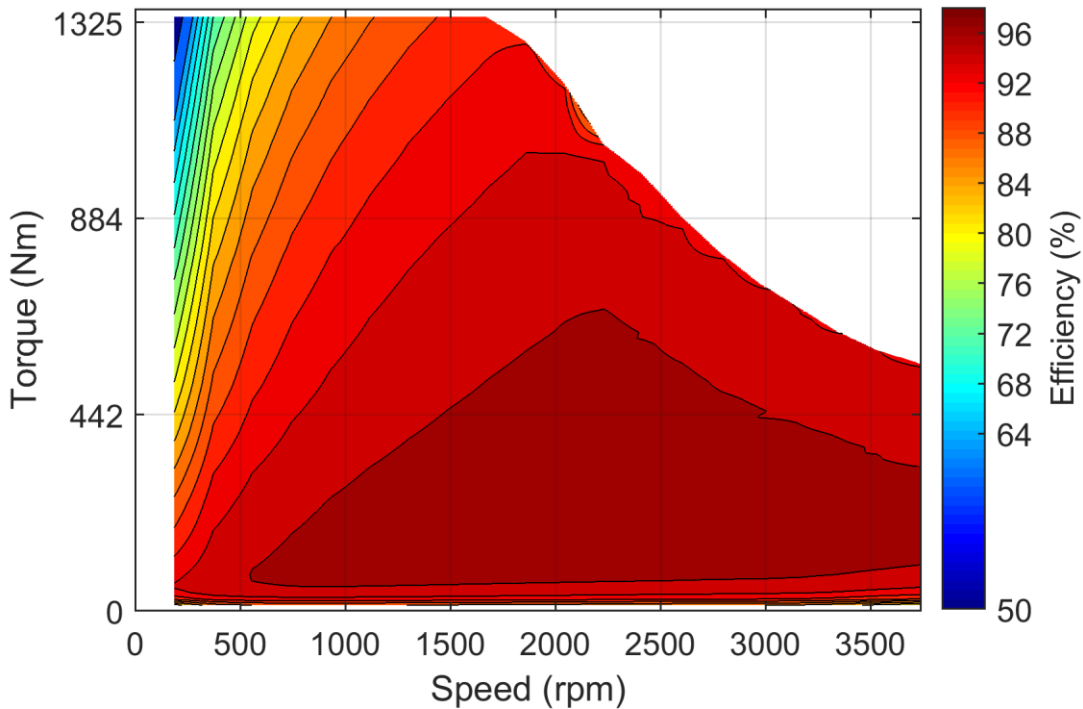
solid lines: continuous; dashed lines: maximum;
(jitter is caused by numerical inaccuracies in the simulation software)



Data, including specifications, contained within this document are summary in nature and subject to change at any time without notice and are intended for general information only. Call for latest revision. All brand names and product names referenced are trademarks, registered trademarks, or trade names of their respective holders.

Simulated Efficiency of Motor Application

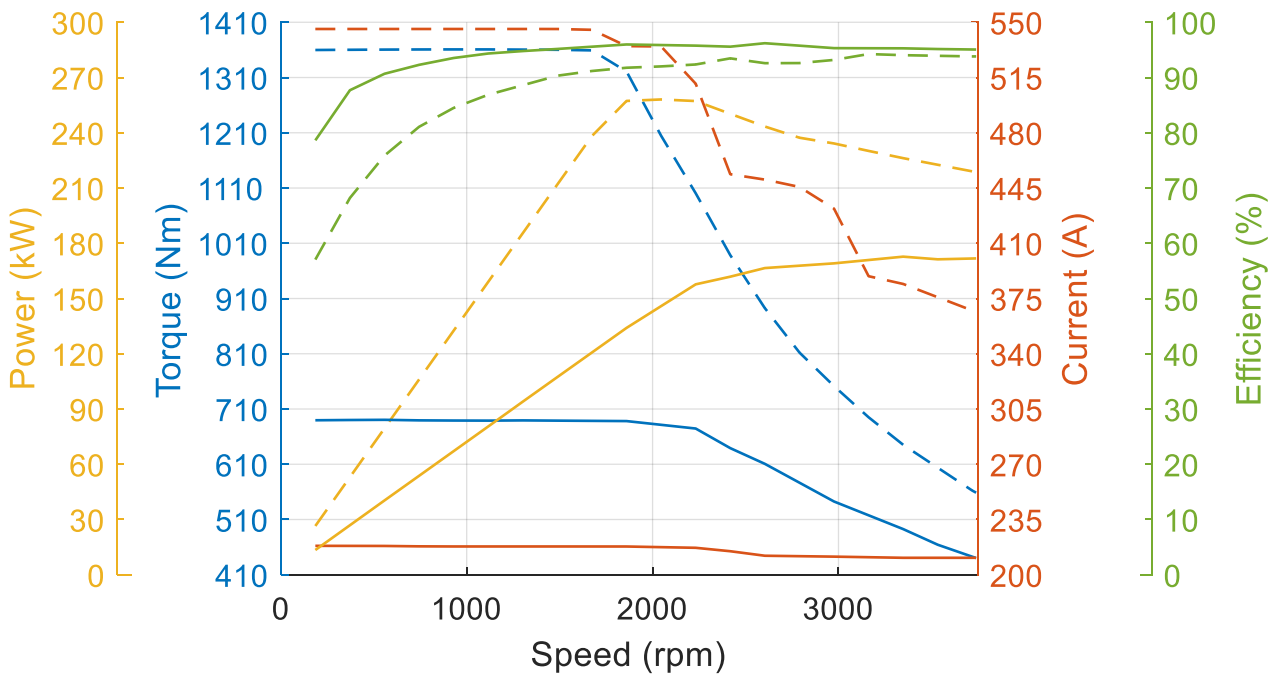
(electric machine only; $U_{nom} = 650\text{ V}$; machine at 100 °C ;)



Simulated Characteristic Motor Parameters

$U_{nom} = 650\text{ V}$

solid lines: continuous; dashed lines: maximum;
(jitter is caused by numerical inaccuracies in the simulation software)

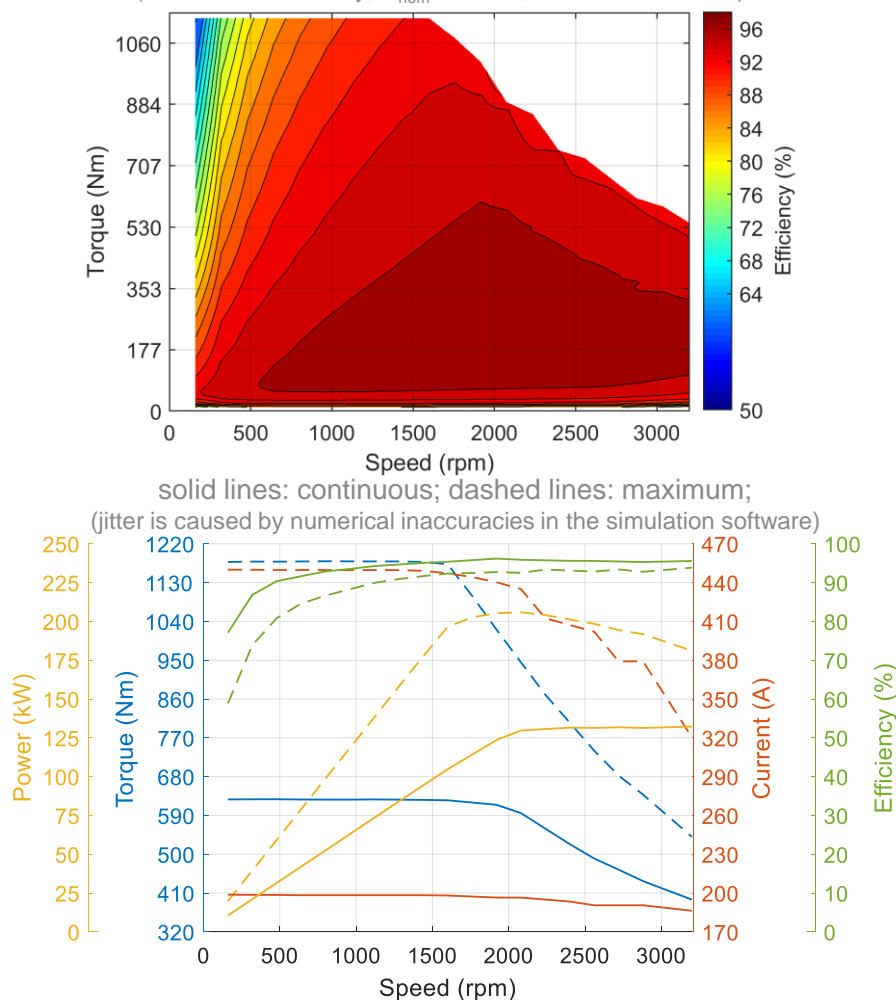


Data, including specifications, contained within this document are summary in nature and subject to change at any time without notice and are intended for general information only. Call for latest revision. All brand names and product names referenced are trademarks, registered trademarks, or trade names of their respective holders.

Nominal Operation Drive Set (S1)			
Torque	T_{nom}	625	Nm
Power	P_{nom}	105	kW
Speed	n_{nom}	1600	rpm
Phase rms-current	I_{nom}	199	A
Battery voltage	U_{nom}	560	V
Electric frequency	$f_{el,nom}$	133	Hz
Power factor	$\cos(\varphi)$	0.73	
Maximal Values Drive Set (S2, 1-10s)			
Torque	T_{max}	1179	Nm
Power	P_{max}	206	kW
Phase rms-current	I_{max}	450	A
Battery voltage	U_{max}	560	V
Speed	n_{max}	3200	rpm
Electric frequency	$f_{el,max}$	267	Hz

Simulated Efficiency and Motor Characteristic of Motor Application

(electric machine only; $U_{nom} = 560$ V; machine at 100 °C;)



Data, including specifications, contained within this document are summary in nature and subject to change at any time without notice and are intended for general information only. Call for latest revision. All brand names and product names referenced are trademarks, registered trademarks, or trade names of their respective holders.

Nominal Operation Drive Set (S1)			
Torque	T_{nom}	625	Nm
Power	P_{nom}	122	kW
Speed	n_{nom}	1860	rpm
Phase rms-current	I_{nom}	199	A
Battery voltage	U_{nom}	650	V
Electric frequency	$f_{el,nom}$	155	Hz
Power factor	$\cos(\varphi)$	0.72	
Maximal Values Drive Set (S2, 1-10s)			
Torque	T_{max}	1179	Nm
Power	P_{max}	240	kW
Phase rms-current	I_{max}	450	A
Battery voltage	U_{max}	650	V
Speed	n_{max}	3700	rpm
Electric frequency	$f_{el,max}$	308	Hz

Simulated Efficiency and Motor Characteristic of Motor Application

(electric machine only; $U_{nom} = 650$ V; machine at 100 °C;)



Data, including specifications, contained within this document are summary in nature and subject to change at any time without notice and are intended for general information only. Call for latest revision. All brand names and product names referenced are trademarks, registered trademarks, or trade names of their respective holders.